

# US-322/366 USB Audio Interface

## Quick Start Guide

Thank you for your purchase of the TASCAM US-322/366 USB Audio Interface.

This compact USB audio interface is ideal for use as part of a digital recording system based around a computer. Using this interface, you can easily mix sounds from the computer, gaming devices, guitars, synthesizers and other instruments, as well as, for example, narration using a microphone, and you can broadcast this mix live on the Internet. The included driver software has a mixer screen and various effect screens

with faders, knobs, buttons and other controls that make operation even more intuitive. This unit can be operated using only USB power, so you can use it together with a notebook computer to make an extremely compact audio mixing and recording system.

This document provides examples of basic operation of this unit. For details, please download the Owner's Manual from the TASCAM website (<http://tascam.com/>) and refer to it.

## IMPORTANT SAFETY PRECAUTIONS

### ■ For U.S.A

#### TO THE USER

This equipment has been tested and found to comply with the limits for a Class B digital device, pursuant to Part 15 of the FCC Rules. These limits are designed to provide reasonable protection against harmful interference in a residential installation. This equipment generates, uses, and can radiate radio frequency energy and, if not installed and used in accordance with the instruction manual, may cause harmful interference to radio communications. However, there is no guarantee that interference will not occur in a particular installation. If this equipment does cause harmful interference to radio or television reception, which can be determined by turning the equipment off and on, the user is encouraged to try to correct the interference by one or more of the following measures.

- a) Reorient or relocate the receiving antenna.
- b) Increase the separation between the equipment and receiver.
- c) Connect the equipment into an outlet on a circuit different from that to which the receiver is connected.
- d) Consult the dealer or an experienced radio/TV technician for help.

#### CAUTION

Changes or modifications to this equipment not expressly approved by TEAC CORPORATION for compliance could void the user's authority to operate this equipment.

#### Declaration of Conformity

Model Number : US-322/US-366  
 Trade Name : TASCAM  
 Responsible party : TEAC AMERICA, INC.  
 Address : 7733 Telegraph Road,  
 Montebello, California, U.S.A.  
 Telephone number : 1-323-726-0303

This device complies with Part 15 of the FCC Rules. Operation is subject to the following two conditions: (1) this device may not cause harmful interference, and (2) this device must accept any interference received, including interference that may cause undesired operation.

This appliance has a serial number located on the rear panel. Please record the model number and serial number and retain them for your records.

Model number \_\_\_\_\_  
 Serial number \_\_\_\_\_

### ■ For Canada

THIS CLASS B DIGITAL APPARATUS COMPLIES WITH CANADIAN ICES-003.  
 CET APPAREIL NUMÉRIQUE DE LA CLASSE B EST CONFORME À LA NORME NMB-003 DU CANADA.

# IMPORTANT SAFETY INSTRUCTIONS

- 1 Read these instructions.
- 2 Keep these instructions.
- 3 Heed all warnings.
- 4 Follow all instructions.
- 5 Do not use this apparatus near water.
- 6 Clean only with dry cloth.
- 7 Do not block any ventilation openings. Install in accordance with the manufacturer's instructions.
- 8 Do not install near any heat sources such as radiators, heat registers, stoves, or other apparatus (including amplifiers) that produce heat.
- 9 Do not defeat the safety purpose of the polarized or grounding-type plug. A polarized plug has two blades with one wider than the other. A grounding type plug has two blades and a third grounding prong. The wide blade or the third prong are provided for your safety. If the provided plug does not fit into your outlet, consult an electrician for replacement of the obsolete outlet.
- 10 Protect the power cord from being walked on or pinched particularly at plugs, convenience receptacles, and the point where they exit from the apparatus.
- 11 Only use attachments/accessories specified by the manufacturer.
- 12 Use only with the cart, stand, tripod, bracket, or table specified by the manufacturer, or sold with the apparatus. When a cart is used, use caution when moving the cart/apparatus combination to avoid injury from tip-over.
- 13 Unplug this apparatus during lightning storms or when unused for long periods of time.
- 14 Refer all servicing to qualified service personnel. Servicing is required when the apparatus has been damaged in any way, such as power-supply cord or plug is damaged, liquid has been spilled or objects have fallen into the apparatus, the apparatus has been exposed to rain or moisture, does not operate normally, or has been dropped.
  - The apparatus draws nominal non-operating power from the AC outlet with its POWER or STANDBY/ON switch not in the ON position.
  - The mains plug is used as the disconnect device, the disconnect device shall remain readily operable.
  - Caution should be taken when using earphones or headphones with the product because excessive sound pressure (volume) from earphones or headphones can cause hearing loss.
  - If you are experiencing problems with this product, contact TEAC for a service referral. Do not use the product until it has been repaired.



## CAUTION

- Do not expose this apparatus to drips or splashes.
- Do not place any objects filled with liquids, such as vases, on the apparatus.
- Do not install this apparatus in a confined space such as a book case or similar unit.
- The apparatus should be located close enough to the AC outlet so that you can easily grasp the power cord plug at any time.
- If the product uses batteries (including a battery pack or installed batteries), they should not be exposed to sunshine, fire or excessive heat.

## Safety Information

### ■ For European Customers

#### Disposal of electrical and electronic equipment

- (a) All electrical and electronic equipment should be disposed of separately from the municipal waste stream via designated collection facilities appointed by the government or the local authorities.
- (b) By disposing of the electrical and electronic equipment correctly, you will help save valuable resources and prevent any potential negative effects on human health and the environment.
- (c) Improper disposal of waste equipment can have serious effects on the environment and human health as a result of the presence of hazardous substances in electrical and electronic equipment.
- (d) The crossed out wheeled dust bin symbol indicates that electrical and electronic equipment must be collected and disposed of separately from household waste.
- (e) The return and collection systems are available to the end users. For more detailed information about disposal of old electrical and electronic equipment, please contact your city office, waste disposal service or the shop where you purchased the equipment.



## ■ For China

产品有毒有害物质或元素的名称及含量

机种：US-322/366		有毒有害物质或元素					
	品名	铅 (Pb)	汞 (Hg)	镉 (Cd)	六价铬 (Cr (VI))	多溴联苯 (PBB)	多溴二苯醚 (PBDE)
1	CHASSIS 部份	○	○	○	○	○	○
2	PCB Assy 部份	×	○	○	○	○	○
3	线材部份	○	○	○	○	○	○
4	附属品部份	○	○	○	○	○	○
5	SEAL 部份	○	○	○	○	○	○
6	包装部份	○	○	○	○	○	○

○：表示该有毒有害物质在该部件所有均质材料中的含量均在 SJ/T11363-2006 标准规定的限量要求以下。

×：表示该有毒有害物质至少在该部件的某一均质材料中的含量超出 SJ/T11363-2006 标准规定的限量要求。

(针对现在代替技术困难的电子部品及合金中的铅)

## Installing the driver

In order to use the US-322/366, you must install the appropriate driver into your computer. As described below, this is an easy process using the CD-ROM included with the US-322/366.

Driver are updated from time to time. You can download the most recent version of the driver from the TASCAM website (<http://tascam.com/>).

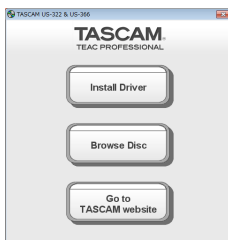
## Installing the driver for Windows

### CAUTION

*When installing the driver, a message saying something like, "The software you are installing for the hardware has not passed Windows Logo testing to verify its compatibility with Windows" might appear. If this message appears, click "Continue Anyway" to proceed with the installation.*

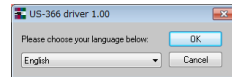
Install the driver on the computer before connecting the unit to it with the USB cable. If you connect the USB cable first and Windows tries to install a driver, cancel it and disconnect the cable.

1. Insert the included driver installation CD-ROM into the PC where you will install it.

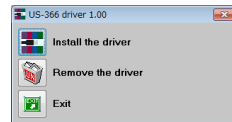


2. Click the "Install Driver" button when the screen below appears. (If this screen does not appear automatically, find and open the "Autorun2.exe" program in the "Autorun" folder on the driver CD-ROM.)

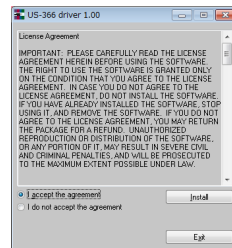
3. When the language selection screen (below) appears, select the language you prefer and then click the "OK" button.



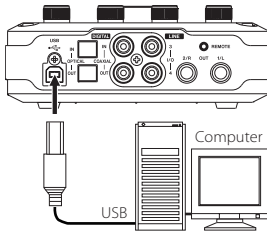
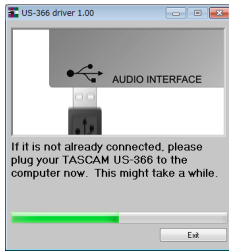
4. Click the "Install the Driver" button when the screen below appears.



5. Read the contents of the License Agreement, and select "I accept the agreement" if you agree to the terms. Next, click the "Install" button to start installation.



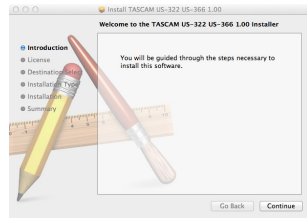
- When the screen below appears, use the supplied USB cable to connect the unit to the PC.



- When the screen below appears, the installation is complete. Click the "Reboot now" button to restart the PC to use the driver.



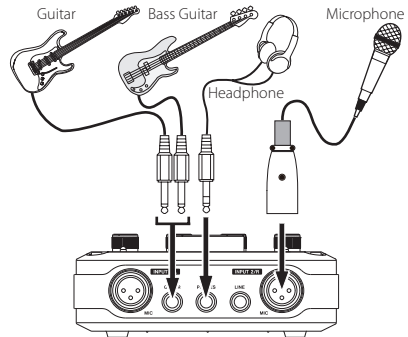
- After the installer launches, follow the instructions on the screen to proceed with the installation.



Restart the computer to complete installation of the driver.

## Connecting other equipment

### Front Panel



Connect mics to the XLR jacks and guitars to the INPUT 1/L jack.

#### CAUTION

- Before turning a 48V switch ON or OFF, turn the output volume down using the PHONES and LINE OUT knobs on the front panel. Depending on the mic, loud noises might be produced and damage could be caused to equipment or to people's hearing.
- Do not connect or disconnect a mic with an input when its 48V switch is ON.
- Turn 48V switch ON only when connecting a condenser microphone that requires phantom power.
- Do not supply phantom power to an unbalanced dynamic microphone.
- Some ribbon mics can be damaged by phantom power. If unsure, do not supply phantom power to a ribbon mic.
- Before connecting headphones, minimize the volume with the PHONES knob. Failure to do so could result in sudden loud noises that might damage your hearing or cause other harm.

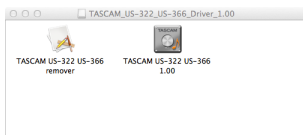
#### NOTE

On this unit, INPUT 1/L and INPUT 2/R each have two input connectors (XLR and TRS). Do not connect signals to both of these analog input jacks at the same time. If both

## Installing the driver for Mac OS X

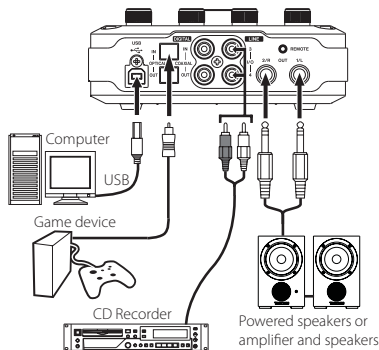
Disconnect the USB cable from the unit before starting installation.

- Load the included driver CD-ROM into the computer you are using.
- Double-click the CD icon that appears.
- Double-click the driver disk image file (TASCAM\_US-322\_US-366\_driver\_1.00.dmg), and then double-click the "TASCAM US-322 US-366 1.00" file inside the open folder.



are connected, the signal will not be correctly input to the US-322/366.

## Rear Panel



### CAUTION

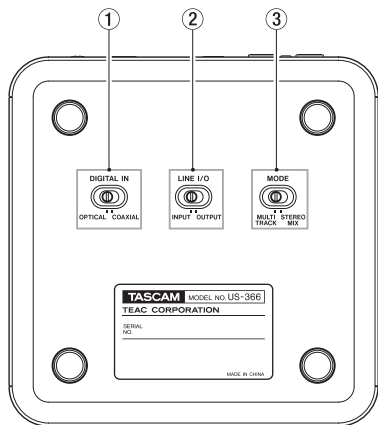
USB 1.1 is not supported.

### NOTE

The US-366 DIGITAL IN/OUT connectors support simultaneous 24-bit/192kHz input and output.

## Making unit settings

On the bottom panel, the US-366 has **DIGITAL IN**, **LINE I/O** and **MODE** switches, and the US-322 has a **MODE** switch.



### CAUTION

Before changing these settings, quit the application and disconnect the USB cable from the unit.

#### ① DIGITAL IN switch (only US-366)

When using a coaxial cable for digital input, set this to **COAXIAL**. When using an optical cable, set this to **OPTICAL**.

### NOTE

You cannot use the coaxial and optical inputs at the same time.

#### ② LINE I/O switch (only US-366)

Set this to **OUTPUT** to use the RCA jacks on the rear panel for output, or set it to **INPUT** to use them for input.

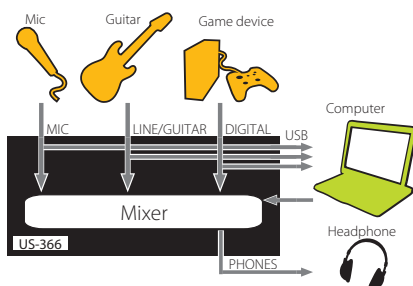
#### ③ MODE switch

Use to set whether or not the mixed sound input into this unit and output from the computer are returned to the computer. Set according to the application.

#### MULTI TRACK mode

At the same time that each input enters the mixer, their signals are sent by separate channels to the computer. They are output in stereo from the mixer, however, so they can be listened to using speakers or headphones.

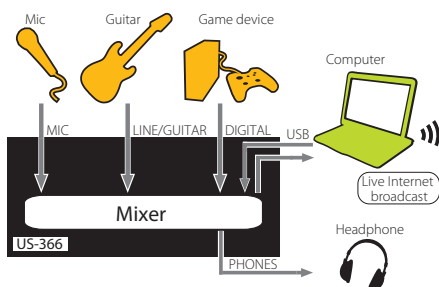
Example: Use with a DAW such as Cubase or similar software



#### STEREO MIX mode

Each input is sent to the mixer, and the stereo output of the mixer is sent by USB to the computer. In addition, the mixer output can also be listened to using speakers or headphones.

Example: Use for live Internet broadcasts



## Connecting the USB cable

After completing the above settings, connect the USB cable.

### CAUTION

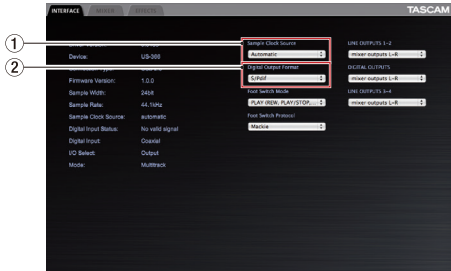
USB 1.1 is not supported.

## Making driver software settings

Press the **MIXER PANEL** button on the top of the unit (see the next item) to open the mixer panel on the computer display.

## INTERFACE screen settings

The mixer panel has three screens that can be selected by their tabs. Select the "INTERFACE" tab to open the following "INTERFACE" screen.



### 1 Sample Clock Source

Usually, this should be set to "Automatic".

### 2 Digital Output Format

Usually, this should be set to "S/PDIF". Change this setting when necessary to use "AES/EBU" with, for example, pro equipment.

For details about the other settings, please refer to the Owner's Manual.

### 2 MON MIX knob

Use to adjust the balance between the sound input through this unit and the sound sent from the computer by USB.

### 3 PHONES knob

Use to adjust the level output from the (PHONES) headphones output jack.

### 4 SIG indicators

These light when a signal (of  $-30$  dBFS or more) is input through the corresponding channel.

### 5 OL indicators

These light just before the input signal distorts (when it exceeds  $-2$  dBFS).

### 6 MIC/LINE-GUITAR switch

When a guitar or bass, for example is connected to the LINE/GUITAR input jack, set this to **GUITAR**. Otherwise, set it to **MIC/LINE**.

### 7 LINE OUT knob

Use to adjust the level output from the line output (OUT 1/L and OUT 2/R) jacks.

### 8 USB indicator

This lights when the USB connection is normal.

### 9 48V indicator

When the **48V** switch is set to **48V**, this indicator lights.

### 10 48V switch

Use this switch to enable phantom power to the mic input connector. When the **48V** switch is set to **48V**, **48V** indicator above it lights.

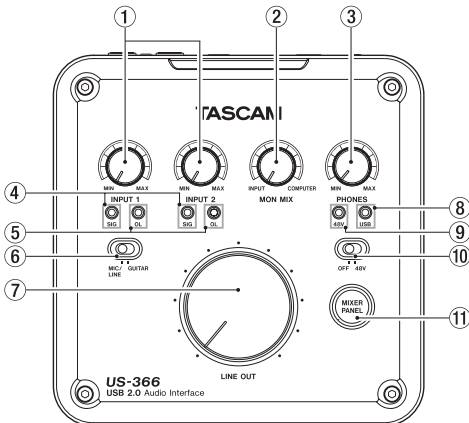
### 11 MIXER PANEL button

Press this button to open the mixer panel on the computer display.

## CAUTION

- Before turning a **48V** switch **ON** or **OFF**, turn the output volume down using the **PHONES** and **LINE OUT** knobs on the front panel. Depending on the mic, loud noises might be produced and damage could be caused to equipment or to people's hearing.
- Do not connect or disconnect a mic with an input when its **48V** switch is **ON**.
- Turn **48V** switch **ON** only when connecting a condenser microphone that requires phantom power.
- Do not supply phantom power to an unbalanced dynamic microphone.
- Some ribbon mics can be damaged by phantom power. If unsure, do not supply phantom power to a ribbon mic.
- Before connecting headphones, minimize the volume with the **PHONES** knob. Failure to do so could result in sudden loud noises that might damage your hearing or cause other harm.

## Listening to the input signal



### 1 INPUT 1/2 knobs

Use the knobs for each input (INPUT 1/L and INPUT 2/R) to adjust their levels. Set them so that their overload (OL) indicators do not light.

# Using the mixer functions on the mixer panel

Press the **MIXER PANEL** button on the top panel of the unit to open the mixer panel on the computer display, and select the "MIXER" tab to show the "MIXER" screen.



**1 Pan sliders**

Drag the sliders left and right to change the stereo position of each channel. They appear blue when centered ("C") and appear orange otherwise.

**2 Faders**

Drag up and down on the faders to adjust the balance of the various inputs. Use the MASTER L/R fader to adjust the overall output level of the mixer.

For details about the other settings, please refer to the Owner's Manual.

- Make the following settings if you are using the unit for live broadcast on the Internet or otherwise as a recording device.
- Click the "Recording" tab, click "Line In TASCAM US-322 (US-366)" and click "Set Default". The green check mark will move to the "Line In TASCAM US-322 (US-366)" item.
- Click "OK".
- Start Windows Media Player, select an audio file and begin playback.

**NOTE**

- If you change the setting while Windows Media Player is running, the software will not recognize that the device has been changed. In this case, restart Windows Media Player.
- If you still cannot hear sound after making the settings and completing the procedures above, restart the computer.
- If you make this setting, sound will be output through this unit, but no sound will be output by the computer's speakers or headphone jack.
- If you want to output Windows Media Player from this unit's DIGITAL OUT, on the "INTERFACE" tab of the mixer panel, set "DIGITAL OUTPUTS" to "Computer 1-2".

# Making computer settings

## Windows and Windows Media Player

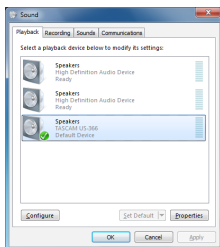
- Quit all applications and open the "Control Panel" from the "Start" menu.
- Open "Sound".

**NOTE**

If you do not see this item, click "Hardware and Sound".

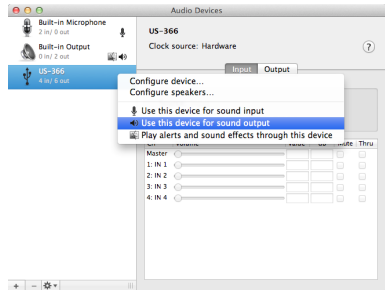


- Click the "Playback" tab, click "Speakers TASCAM US-322 (US-366)" and click "Set Default". The green check mark will move to the "Speakers TASCAM US-322 (US-366)" item.



## Mac OS X and iTunes

- Open the Utilities folder, which is inside the Applications folder, and double-click Audio MIDI Setup to launch it.
- Control-click the US-322/366. Check use this device for sound output. This moves speaker icon to US-322/366.



Make the following settings if you are using the unit for live broadcast on the Internet or otherwise as a recording device.

Control-click the "US-322(US-366)". Check use this device for sound input. This moves microphone icon to "US-322(US-366)".

- Launch iTunes, select an audio file and start playback.

**NOTE**

If you want to output iTunes from this unit's DIGITAL OUT without passing through its mixer, on the "INTERFACE" tab of the mixer panel, set "DIGITAL OUTPUTS" to "Computer 1-2".

# TASCAM

## US-322/366

### TEAC CORPORATION

Phone: +81-42-356-9143  
1-47 Ochiai, Tama-shi, Tokyo 206-8530 Japan

<http://tascam.jp/>

---

### TEAC AMERICA, INC.

Phone: +1-323-726-0303  
7733 Telegraph Road, Montebello, California 90640 USA

<http://tascam.com/>

---

### TEAC MEXICO, S.A. de C.V.

Phone: +52-55-5010-6000  
Río Churubusco 364, Colonia Del Carmen, Delegación Coyoacán, CP 04100, México DF, México

<http://teacmexico.net/>

---

### TEAC UK LIMITED

Phone: +44-8451-302511  
Suites 19 & 20, Building 6, Croxley Green Business Park, Hatters Lane, Watford, Hertfordshire. WD18 8TE, U.K.

<http://tascam.eu/>

---

### TEAC EUROPE GmbH

Phone: +49-611-71580  
Bahnstrasse 12, 65205 Wiesbaden-Erbenheim, Germany

<http://tascam.eu/>

---

Printed in China