
Latest versions and updates

The latest driver and firmware versions for these units are as follows.

■ Windows

Driver: 1.02 (Now updated from version 1.01)

Firmware: 1.02 (Now updated from version 1.00d9)

■ Mac OS X

Driver: 1.02 (Now updated from version 1.01)

Firmware: 1.02 (Now updated from version 1.00d9)

Always ensure that you are running the latest driver software and US-322 or US-366 firmware by visiting TASCAM's web site (<http://tascam.com/>).

Important Notice about the driver installation

Please be sure to remove the old driver before installing this driver.

Maintenance items

Firmware

■ Version 1.02

- If the computer was started or a USB cable was connected when using a US-366 in **STEREO MIX** mode with an external 176.4/192kHz digital signal being input, the computer 1/2 signals would not be output. This has been fixed so that these signals are output.
- When REVERB was turned on, noise would occur. This has been fixed.

For Mac OS X Driver

■ Version 1.02

- Until the Mixer Panel was opened after a US-322/US-366 was started, only the signal from the computer would be output from the unit's output jacks regardless of the **MON MIX** knob setting. External input signals would not be output. This has been fixed so that the output corresponds to the **MON MIX** knob setting. (When in **STEREO MIX** mode, the **MON MIX** knob is disabled as normal.)
- When using a US-322/US-366, if the stereo link was turned on when the dynamics effects assignment was off for an odd-numbered channel (Digital 1, Analog 1, etc.) and on for an even-numbered channel (Digital 2, Analog 2, etc.), the dynamics effects would still be enabled for the even-numbered channel even though the assignment for both channels would appear to be off. This has been fixed so that assignments are disabled for both channels in this situation.
- When using a US-322/US-366 in **STEREO MIX** mode, if the unit was started when the dynamics effects were on but not assigned to any channel, the dynamics effects would be enabled for Computer 1. This has been fixed.
- When using a US-366 with a 16-bit digital input signal, the overload indicators on the MIXER page meters would not appear when the maximum level was reached. This has been fixed so that they appear.

■ Version 1.01

- On the US-322 or US-366 "MIXER" page, if an input channel send point setting (where the signal is sent to the effect send bus) was "PRE" and "MUTE" was on, when the send level volume of that channel was adjusted, the signal sent to the send bus was muted. This has been fixed so that it is not muted.
- With a US-322 or US-366, if a sound that has sudden level changes was input through Computer 1-6, the levels shown by the meters would be lower than the actual levels. This has been fixed so that the actual levels are shown.
- With a US-322 or US-366, if the sample rate was 88.2 kHz or 96 kHz, if you changed a dynamics effect parameter on the "EFFECT" page, noise was mixed into the audio during the adjustment. This has been fixed so that this noise does not occur.

TASCAM US-322/US-366 Release Notes

- If you turned a US-322 or US-366 on when a stereo link was on (when a stereo link button should be yellow), the stereo link button would become grey. This has been fixed so that the button becomes yellow.
- With a US-366, if a sound is input through **Digital 1/2** and "MUTE" is on for **Digital 1/2**, if the Mixer Panel was opened from a closed state, depending on the sound, a small strange noise could be heard in the digital input sound. This has been fixed so that no strange noise occurs.

For Windows Driver

■ Version 1.02

- When using a US-322/US-366, if the stereo link was turned on when the dynamics effects assignment was off for an odd-numbered channel (**Digital 1, Analog 1**, etc.) and on for an even-numbered channel (**Digital 2, Analog 2**, etc.), the dynamics effects would still be enabled for the even-numbered channel even though the assignment for both channels would appear to be off. This has been fixed so that assignments are disabled for both channels in this situation.
- When the computer was turned off (or restarted) while the unit was connected, fader positions and other settings would not be saved. This has been fixed. (SOLO, MUTE and some other conditions are not saved.)

■ Version 1.01

- After starting the US-322/366, the mixer panel could not be opened from the Windows Start menu until the **MIXER PANEL** button on the unit had been used once to open it. This has been changed, so it is now possible to open the mixer panel from the Start menu before the **MIXER PANEL** button has been pushed.
- With the US-366, if the "Sample Clock Source" item on the "INTERFACE" page was set to "Automatic", once an external digital device had been connected to the unit, the sampling rate could not be changed from a DAW even if the "Sample Clock Source" item was set to "Internal". This has been changed so that if this setting is changed to "Internal", the sampling rate can be changed from a DAW.

Known Issues

For Windows Driver

■ Version 1.01

- If the dynamics effect assignment is off for an odd channel (**Digital 1, Analog 1**, etc.) and on for even channel (**Digital 2, Analog 2**, etc.), when a stereo link is turned on, the assignments for both odd and even channels appear to turn off, but the dynamics effect actually becomes active on the odd channel.
To restore normal operation, after turning the stereo link on, turn the dynamics effect assignment on once and then off again.
- With the US-366, even though the number of computer input and output audio channels changes depending on the settings of the **MULTITRACK/STEREO MIX MODE** switch and **LINE I/O** switch (for the **LINE I/O 3/4** jack), 6 input and 6 output ports can always be seen from the DAW. Please do not select in the DAW ports that cannot be used according to the settings. If selected, there will be no audio signal, so only silence will be heard.
The gray cells in the table below show the unused ports for each setting.

Mixer mode	LINE I/O switch	Input (US-366 → computer)			Output (computer → US-366)		
		ch 1/2 (Analog 1/2)	ch 3/4 (Digital 1/2)	ch 5/6 (Analog 3/4)	ch 1/2 (Computer 1/2)	ch 3/4 (Computer 3/4)	ch 5/6 (Computer 5/6)
MULTITRACK	INPUT						
	OUTPUT						
STEREO MIX	INPUT						
	OUTPUT						

- With the US-366, when in **STEREO MIX** mode, if the computer is turned on or a USB cable is connected while an external 176.4/192kHz digital signal is being input, the computer 1/2 signals might not be output.
To restore normal operation, change the "Sample Clock Source" setting on the "INTERFACE" page from "automatic" to "internal" once and then back to "automatic".

For Mac OS X Driver

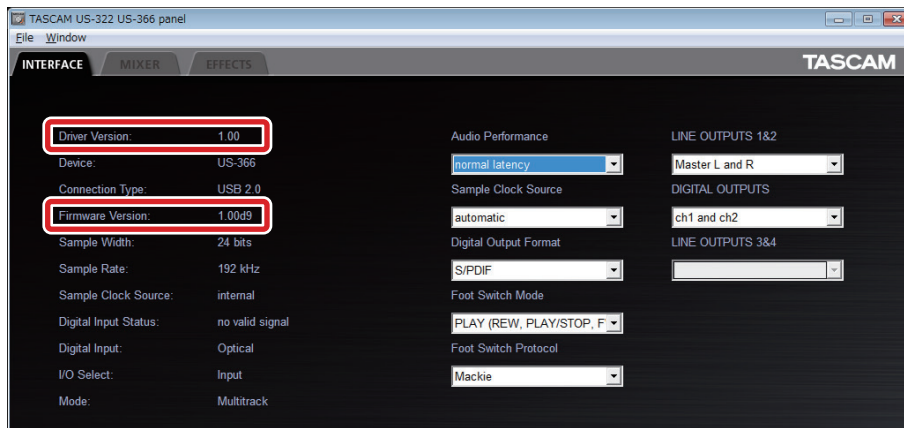
■ Version 1.01

- After starting a US-322 or US-366, until the Mixer Panel is opened, regardless of the **MON MIX** knob position, sounds input through the unit's external inputs will not be output from its connectors. Only sounds output from the computer will be output. If you want to listen to external input sounds with the Mixer Panel closed, or you do not want sound output from the computer to be output from this unit, after starting the unit, open the Mixer Panel once. After opening the mixer panel once, no problems will occur even if you close it.
- If the dynamics effect assignment is off for an odd channel (Digital 1, Analog 1, etc.) and on for even channel (Digital 2, Analog 2, etc.), when a stereo link is turned on, the assignments for both odd and even channels appear to turn off, but the dynamics effect actually becomes active on the odd channel.
To restore normal operation, after turning the stereo link on, turn the dynamics effect assignment on once and then off again.
- When operating in **STEREO MIX** mode, if the unit is turned on when the dynamics effect is on but not assigned to any channel, the dynamics affect will become active for Computer 1.
To restore normal operation, after turning the unit on, turn the Computer 1 dynamics assignment on once and then off again.
- With a US-366, if the digital input signal sample width is 16-bit, the overload indicators on the Mixer Panel meters will not become brighter when the maximum level is reached.
- With the US-366, when in **STEREO MIX** mode, if the computer is turned on or a USB cable is connected while an external 176.4/192 kHz digital signal is being input, the computer 1/2 signals might not be output.
To restore normal operation, change the "Sample Clock Source" setting on the "INTERFACE" page from "automatic" to "internal" once and then back to "automatic".

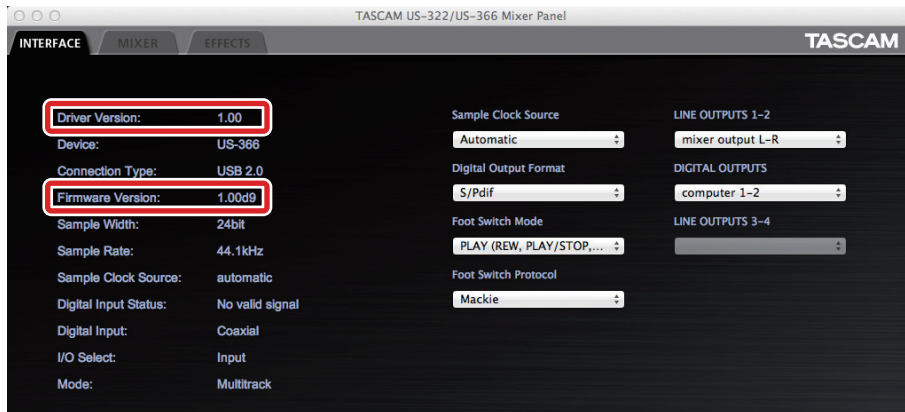
Checking the driver and firmware versions

Check the current versions before beginning to update the US-322 or US-366 driver and firmware.

1. Press the **MIXER PANEL** button on the unit to open the Mixer Panel.
2. Click the "INTERFACE" tab to open the "INTERFACE" page.
3. Check the "Driver Version" and "Firmware Version" items on this page.



Windows US-366 Mixer Panel



Mac OS X US-366 Mixer Panel

How to install drivers

Follow the procedures below to install the latest driver and then update the firmware.

Windows

■ Driver updating procedures

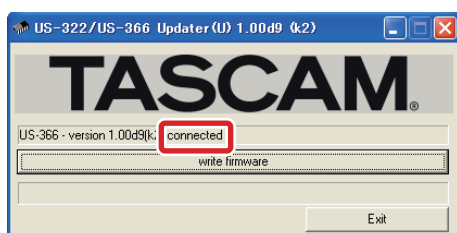
Before beginning installation, disconnect the US-322 or US-366 from the USB cable. Before installing the new driver uninstall any existing driver on the computer. See "Uninstalling the driver" in the Owner's Manual for instructions.

1. Download the latest driver (Ver. x.xx driver) for your operating system from the TASCAM website (<http://tascam.com/>), and save it to your computer's hard disk.
2. Uncompress the driver zip file on the hard disk.
3. Double-click the "setup.cmd" file to start installation. Follow the procedures in the Owner's Manual to complete the installation.

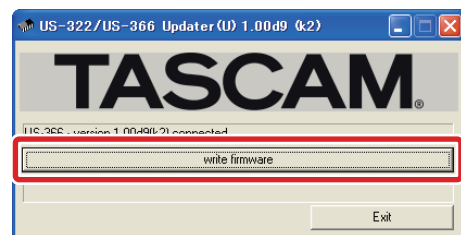
■ Firmware updating procedures

After completing installation of the driver and restarting the computer, update the firmware.

1. Download the latest firmware (Ver. x.xx firmware updater (Windows)) for your operating system from the TASCAM website (<http://tascam.com/>) and save it to your computer's hard disk.
2. Uncompress the saved zip file, and double-click the exe file that appears to start the firmware updater.
3. Connect the US-322 or US-366 to the computer by USB, and confirm that connected appears on the updater screen.



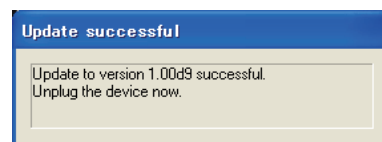
4. Click the write firmware button to start the update.



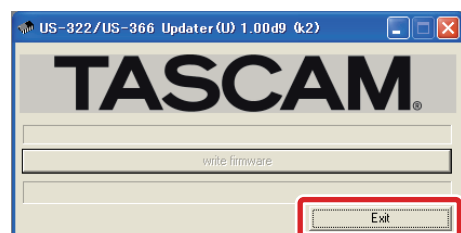
CAUTION

While updating, do not disconnect the USB cable or turn the computer's power OFF. Doing so could damage the firmware, making further updating and ordinary operation impossible.

5. When the following message appears after updating completes, disconnect the USB cable.



6. After you disconnect the USB cable, the message above disappears. Click the Exit button to complete the update.



Reconnect the USB cable to start the unit with the new firmware.

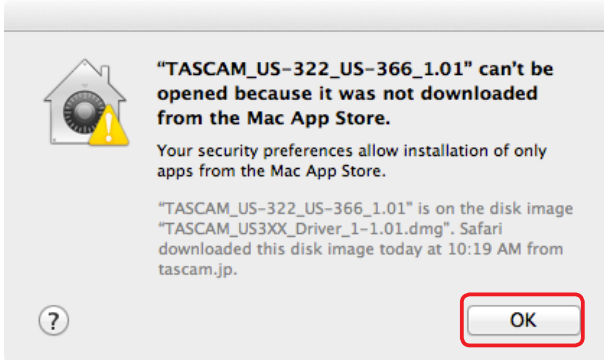
Mac OS X

■ About Gatekeeper

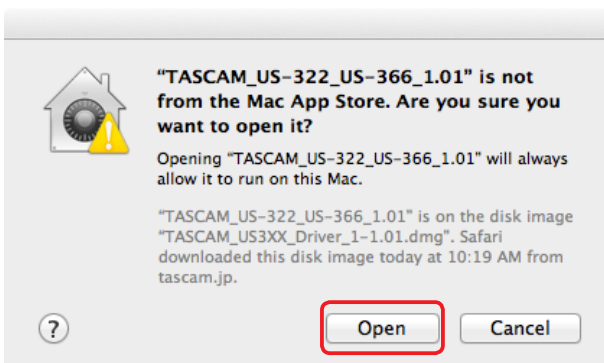
There are some cases where a caution window can appear during the installation, depending on the Gatekeeper setting.

● In case Gatekeeper has been set to "Mac App Store".

The security caution ""(filename)" can't be opened because it was not downloaded from the Mac App Store." may appear.



In this case, close the caution window by clicking "OK", then control-click on the file. Select the "Open" item. The caution window ""(filename)" is not from the Mac App Store. Are you sure you want to open it?" will appear. Click the "Open" button.



There are cases when that same caution will appear when the gatekeeper has been set to something other than "Allow the application from Mac App Store only". There are also cases where you can't open the file and a message will appear saying ""(filename)" can't be opened because it was not downloaded from the Mac App Store".



In this instance, execute the file after copying it from the original folder to a different folder (or your desktop).

You can also execute the file after changing the Gatekeeper setting to "Mac App Store and identified developers".

● When the Gatekeeper has been set to something other than "Mac App Store".

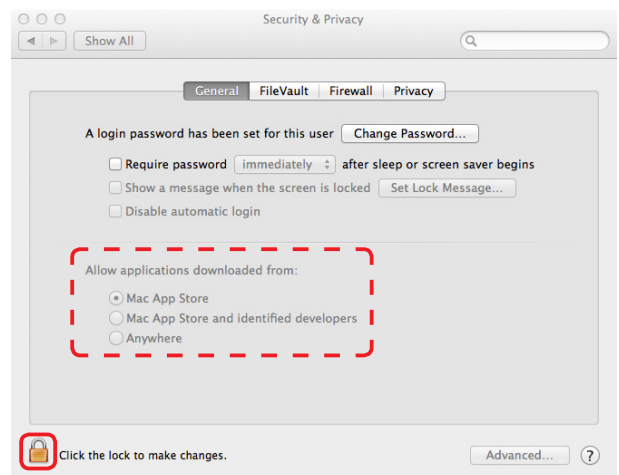
The following security caution ""(filename)" is an application downloaded from the Internet. Are you sure you want to open it?" can appear. Click the "Open" button.




● To change the gatekeeper setting.

Gatekeeper setting can be changed via the following path: "System Preferences" "Security & Privacy" "General" "Allow application downloaded from:".

To change the setting, click the lock icon at the bottom left, then input your system password.



This lock is re-applied if the system environment setting is close by the  button or command+Q etc, or moving away from this panel by clicking "Show all".

CAUTION

Your computer is exposed to a certain level of risk (downloading unsigned apps) by changing the Gatekeeper setting.

If the security level was changed to "Anywhere" (for the purpose of downloading the driver and firmware files), please return the selection to either "Mac App Store" or "Mac App Store and identified developers"

TASCAM US-322/US-366 Release Notes

after completing the driver and/or firmware installation.

■ Driver updating procedures

Before beginning installation, disconnect the US-322 or US-366 from the USB cable. Before installing the new driver uninstall any existing driver on the computer. See "Uninstalling the driver" in the Owner's Manual for instructions.

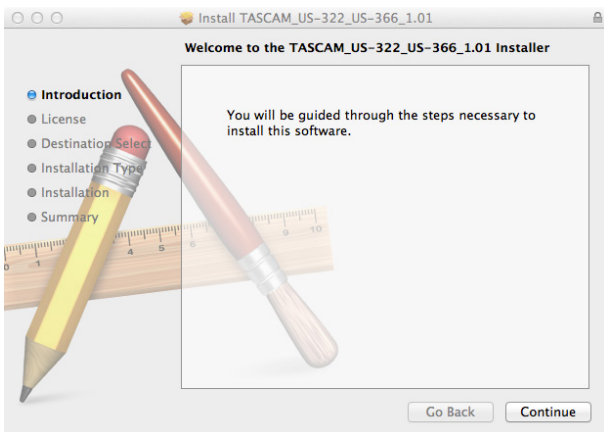
1. Download the latest driver (Ver. x.xx driver) for your operating system from the TASCAM website (<http://tascam.com/>).
2. Double-click the disc image file (.dmg file) you downloaded, then double-click the "TASCAM_US-322_US-366_x.xx" file in the opened folder.



NOTE

There are times that the zip file you downloaded will not be automatically unzipped depending on your computer environment. In this case, double-click the disc image file after unzipping the zip file.

3. After the installer launches, follow the instructions on the screen to proceed with the installation.



4. Click the "Restart" button to quit the installer and restart the computer.

■ Firmware update procedures

After completing installation of the driver and restarting the computer, update the firmware.

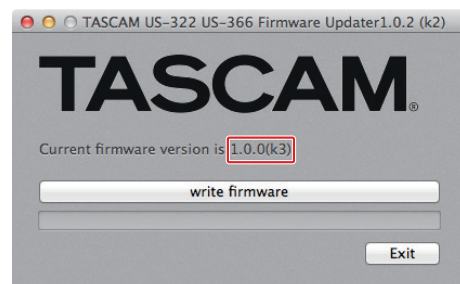
1. Download the Ver. x.xx firmware updater (for Mac OS X) from the TASCAM website (<http://tascam.com/>).
2. Double-click the downloaded updater where it appears in the download window, for example, to launch the firmware updater.

NOTE

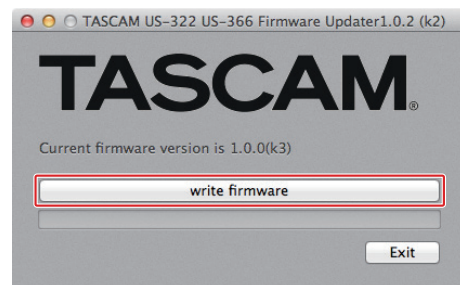
• *This security warning might appear: "FW Updater..." is an application downloaded from the Internet. Are you sure you want to open it?" If it does, click the "Open" button. Moreover, if the updater disappears from the desktop when this message appears, click the updater's icon in the dock.*

• *Depending on the system being used, the downloaded zip file might not decompress automatically. In this case, decompress the zip file and then double-click the updater.*

3. Connect the US-322 or US-366 to the computer by USB, and confirm that the current driver version is shown.



4. Click the "write firmware" button to start the update.

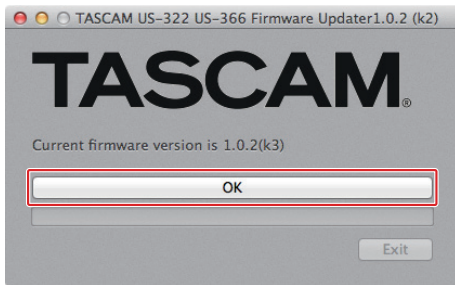


CAUTION

Do not disconnect the USB cable during the update.

TASCAM US-322/US-366 Release Notes

- When the following message appears after updating completes, click the "Ok" button.



CAUTION

If "Ok" is not shown, the update did not complete successfully. Click the "write firmware" button again to execute the update.

- The message in step 5 will disappear, so clicking the "Exit" button will complete the update.

