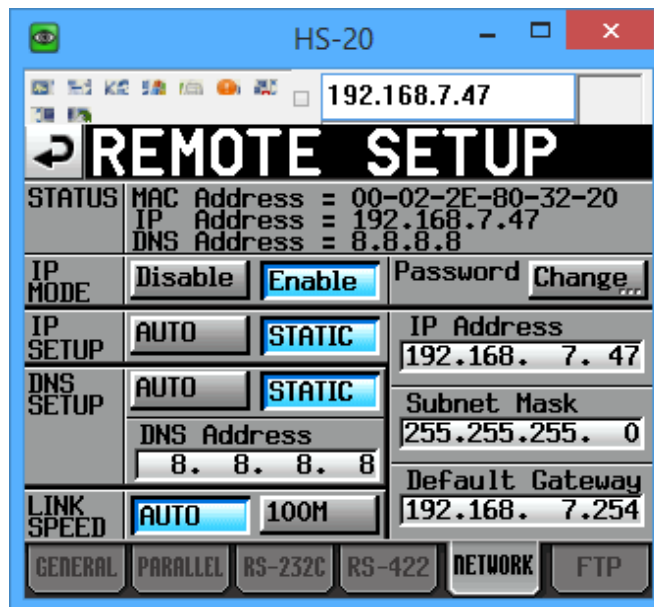


How to access the TASCAM HS-20 using FTP via Windows Explorer

The HS-20 and other TASCAM HS products contain a FTP server which can be used to access the media contents for manual transfer of files to and from a computer.

Windows has a built in FTP client that can be used from Explorer, but it requires some know-how. The example below is from within Windows 8.1

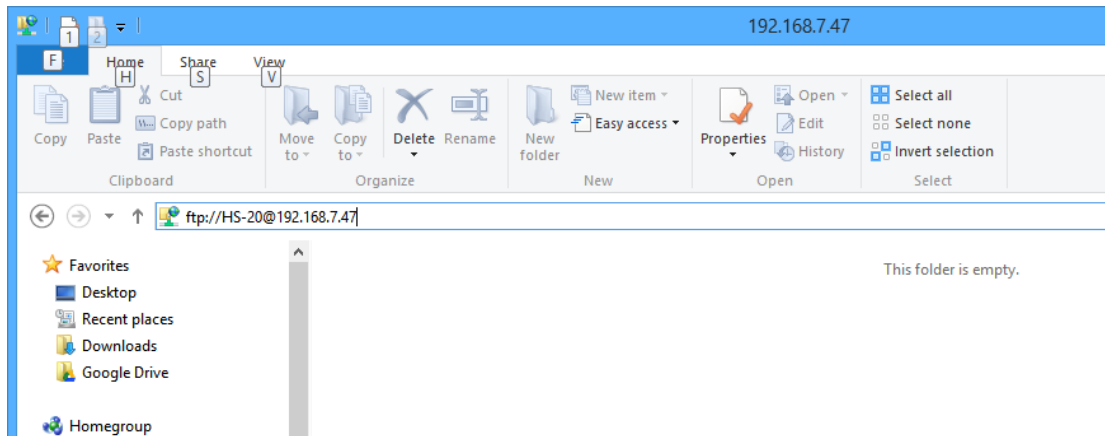
1. First check on the HS-20 for its IP Address, MENU -> REMOTE SETUP -> NETWORK tab.



In this case the IP address was set manually (STATIC), and is 192.168.7.47

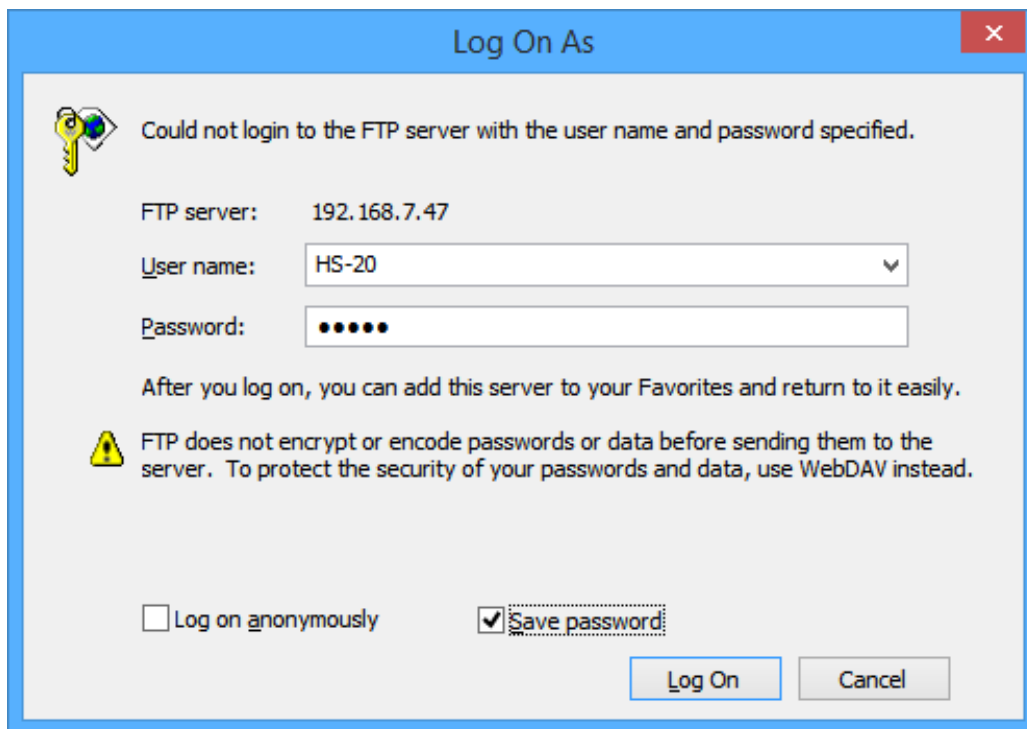
NOTE: This screenshot was created by using a free Windows application called "UltraVNC" to access the HS-20's LCD display remotely.

2. Open an Explorer window, click in the address bar and type <ftp://HS-20@192.168.7.47> . The "HS-20@" part is important. HS-20 is the username, and is always fixed. The number here should be the IP address of the HS-20.



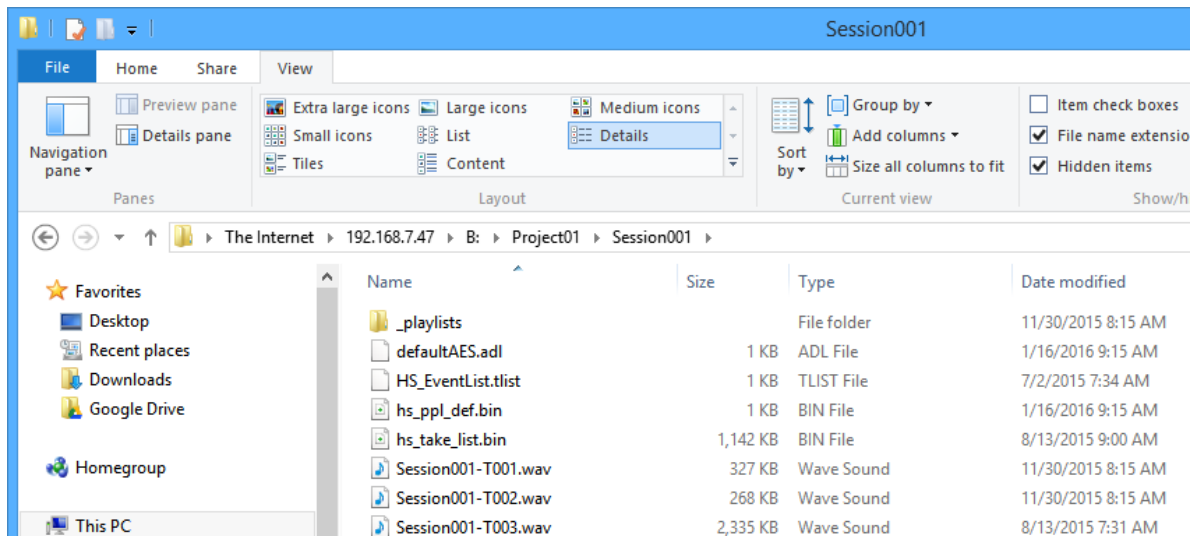
NOTE: If you omit the “HS-20@” part, Windows attempts to log in using the name “Anonymous”, which the HS-20 will refuse, producing an error message. If you omit the “ftp:” part, Windows will attempt to connect via CIFS/SMB, which the HS-20 does not support.

3. The following dialog appears, asking for the password



Type in the password you have previously set on the HS-20 (default is HS-20). Optionally click “Save password”, then click Log On.

- The explorer window should show 3 directories, “A:” “B:” and “C:”. A is the SD card slot, B is the CF card slot and C is the USB media. If there is no media in these slots, attempting to open them will show an error. The screen shot below shows the contents of a directory on the CF card.



NOTE: The “HS-20@” part of the address is no longer shown. This is normal.

- Drag and drop files as normal to other Explorer windows to transfer files.

NOTE: It is not possible to do “Right Click” -> “New”-> “Folder” here. Windows always creates the folder “New Folder” first, and then lets you rename it. The HS-20 does not support renaming of folders via FTP, so this produces an error. The folder “New Folder” will remain though.

NOTE: The HS-20 and other HS series products are fully Unicode compliant, so files named in any language can be transferred and played back. The LCD screen has a font that can display most European characters, all Japanese, Chinese and Korean characters, and a few others like Thai. Non-displayable characters are shown as squares, but the files are still selectable and playable.

The HS-20 also contains an FTP Client that can be automated to transfer files for you unattended. This requires an FTP server on your network; this will be the subject of a different application note.