

New functions added in firmware V1.50

Previously, the only mode in which you could use two players was the dual playlist mode. In that mode, the key output destinations were fixed with keys on the left side being used by Player A and keys on the right side being used by Player B. Now, however a new A/B MIXED playlist mode, which allows you to switch outputs between A and B freely, has been added in firmware V1.50.

1. Unique features of the A/B MIXED playlist mode

- Using a TASCAM RC-HS32PD remote control, dual flash start playback (32 keys × 3 pages) is possible
- Two output destinations can be set independently for each entry
- The functions of flash keys when pushed during playback can be set independently for each entry
- Indications on the displays of this unit and the RC-HS32PD, as well as the flash keys, are divided into five colors, making it easy to confirm output destinations and statuses immediately

2. Functions that are the same as in dual playlist mode

- Unit functions as two independent playback systems
- Simultaneous playback of two polyphonic files with up to two channels each is possible at all compatible
- sampling frequencies (Fs).

3. Functions that are the same as in playlist mode

- Playlist editing and management
- Compatibility with JPPA flash start standards enable importing and exporting, and the exchange of playlists with other devices.

A/B MIXED playlist mode has been added to the OPERATION MODE screen

As shown in the screen below, PLAYLIST MODE (A/B MIXED) has been added.



Home Screen when A/B MIXED playlist mode is active



Generally, it is mostly the same as dual playlist mode except for the following points.

① File name and title name indications (buttons)

Icons that appear in entry numbers have been separated into colors as shown below.

Icon	Meaning
	Player A A valid entry has been assigned
	Player B A valid entry has been assigned
	No entry has been assigned

② Flash page and knob operation and display

Players A and B share the same flash page settings. When operated, the pages and knobs of both Players A and B will change in parallel.

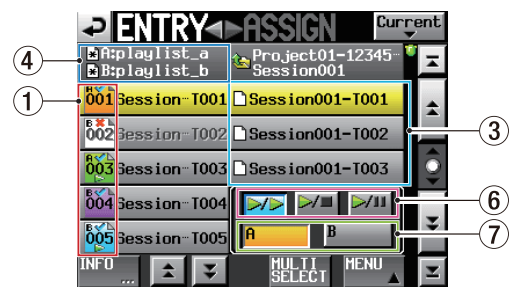
Playlist editing (adding, moving and editing entries)

Changed items

The icons in the entry name buttons on the ENTRY list screen and the key assign list buttons on the ASSIGN screen are now categorized by color as shown below.

ENTRY screen	ASSIGN screen	Meaning
		Entry assigned to Player A (stopped)
		Entry assigned to Player A (in use)
		Entry assigned to Player B (stopped)
		Entry assigned to Player B (in use)
		Entry is a format that cannot be played back (same as before)
		No entry (same as before)

These icons and buttons sorted by color appear as shown in (1) in the screens below.



[ENTRY list screen]



[ASSIGN screen]

③ Take name list and buttons

When in A/B MIXED mode, the take name list and buttons appear as three lines.

④ Playlist name display button


The upper line shows the name of the Player A playlist and the lower line shows the name of the Player B playlist. (In other modes, the upper line shows the session name.)




⑤ PLAY buttons

When a Player A entry is playing back, its button appears green. When a Player B entry is playing back, its button appears light blue.

New items

⑥ Flash key operation setting buttons

Use these buttons to set for each entry what happens when the flash key-board entry that is playing back is pushed. The default setting is .

Setting	Meaning
	When the flash key of an entry that is playing back is pressed, playback starts again from the beginning of the entry (default value).
	When the flash key of an entry that is playing back is pressed, playback stops. Pressing the key again starts playback from the beginning of the entry.
	When the flash key of an entry that is playing back is pressed, playback pauses. Pressing the key again starts playback of the entry from where it was paused.

⑦ Output destination selection buttons

Use these buttons to select either A or B as the output destination for each entry. The default value is "A".

NOTE

If no entry is selected or no entry has been added, the screen appears as follows with these buttons unselected and disabled.



[When no entry has been added to the ENTRY list screen]



[When no entry has been selected on the ASSIGN screen]

INFO pop-up message

If you press the INFO button when no entry has been selected, information about the Player A playlist appears in a pop-up window. Press the NEXT button to show information about the Player B playlist.

Pull-up menu

In dual playlist mode, only the SAVE AS button of the selected Player is shown, but in A/B MIXED playlist mode, both "SAVE AS(A)" and "SAVE AS(B)" buttons are always shown.



[Entry list screen]

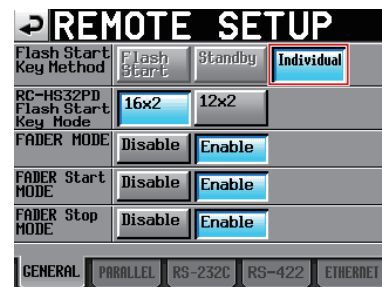


[ASSIGN screen]

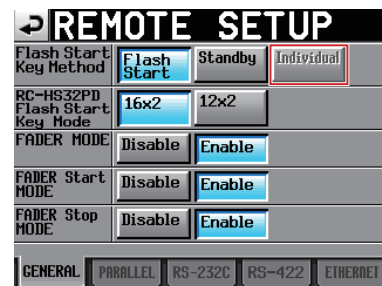
REMOTE SETUP screen

On the GENERAL page, "Individual" has been added as an option to the "Flash Start Key Method" item.

When the operation mode is A/B MIXED playlist mode, this setting will be fixed on "Individual". Other options are disabled and cannot be selected. In other operation modes, "Individual" is disabled and cannot be selected.



[When operation mode is A/B MIXED playlist mode]



[When operation mode is not A/B MIXED playlist]

Colors of flash keys on the TASCAM RC-HS32PD remote control




The flash keys on the TASCAM RC-HS32PD remote control are classified by color as follows in the same manner as the icons inside the entry name buttons on the entry list screen and the buttons in the key assign list on the ASSIGN screen (See "Playlist editing (adding, moving and editing entries)" on the previous page).

Output destination	Stopped	Playing	Playback standby	Incorrect entry	No entry
A	Orange	Green	Orange blinking	Red	Unlit
B	Purple	Blue	Purple blinking	Red	Unlit

Other information and restrictions in this mode

- The "Auto Cue", "Auto Ready" and "Inc. Play" settings on the CONTROL page of the PLAY SETUP screen are all fixed to "OFF".
- The "Play Mode" item on the GENERAL page of the PLAY SETUP screen is fixed to "One Take".
- The "Flash Start Key Method" item on the General page of the REMOTE SETUP screen is fixed to the new "Individual" setting. In modes other than A/B MIXED dual playlist mode, the "Individual" option cannot be selected.
- Only three time display modes—elapsed time, "REMAIN" and "T/C" can be used. "TOTAL" and "TOTAL REMAIN" are not shown.
- When an existing playlist is loaded, if A/B output destination settings for the same entry differ, the setting of the most recently loaded playlist is used.
- When a PPL file is imported, if A/B output destination settings for the same entry differ, the output destination becomes A for those entries.

Comparison of functions in DUAL and A/B MIXED playlist modes

	Dual playlist mode	A/B MIXED playlist mode
Number of players	2	2
Number of supported audio channels	2	2
Number of flash start playback entries	100 x 2	100
Number of flash start entries when using an RC-HS32PD	16 keys x 6 pages x 2	32 keys x 3 pages
Keys that can be assigned to Player A when using an RC-HS32PD	The 16 keys on the left side of the RCHS32PD	All 32 keys on both left and right sides of the RC-HS32PD
Keys that can be assigned to Player B when using an RC-HS32PD	The 16 keys on the right side of the RCHS32PD	All 32 keys on both left and right sides of the RC-HS32PD
Entry output destination setting	Fixed according to flash key position	Can be set as desired
Flash key operation setting	One of two options can be set for all keys together (Flash Start/Standby)	Three options can be set independently for each key ( /  / )

