

TASCAM

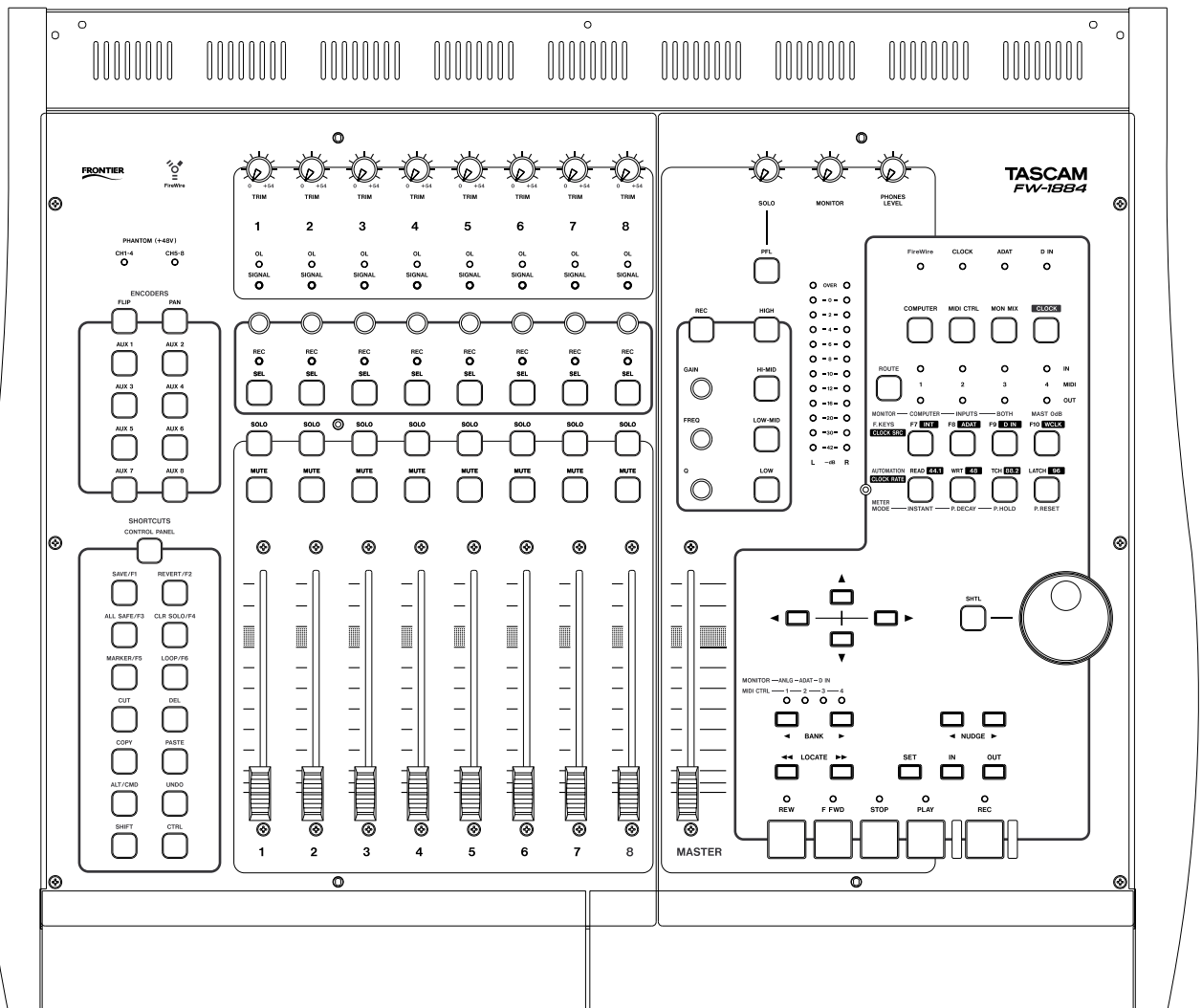
TEAC Professional Division

FRONTIER

DESIGN GROUP

FW-1884

Professional Control Surface / FireWire Audio-MIDI Interface



Cubase SX/SL / Nuendo (Windows/Mac) NOTES

Table of Contents

Setup	3
To set up the FW-1884 in Cubase or Nuendo	3
To set up the FW-1884 in Mackie Emulation protocol.....	3
Emulation mapping	4
EQ (Mackie Control Mode)	5
Encoder settings	5
Shortcuts Section	6
Function/Automation Keys.....	7
Footswitch.....	7

The FW-1884 controls Steinberg's Cubase SX, Cubase SL and Nuendo using the Mackie Control or Mackie HUI emulation protocols. (HUI emulation notes can be found in a separate document). Cubase and Nuendo "see" the FW-1884 as a Mackie Control in their Device menus.

This section describes the mapping of the FW-1884's control surface in Mackie Control Emulation protocol, and how this mapping corresponds to the controls in Cubase and Nuendo. It is not intended as a guide to

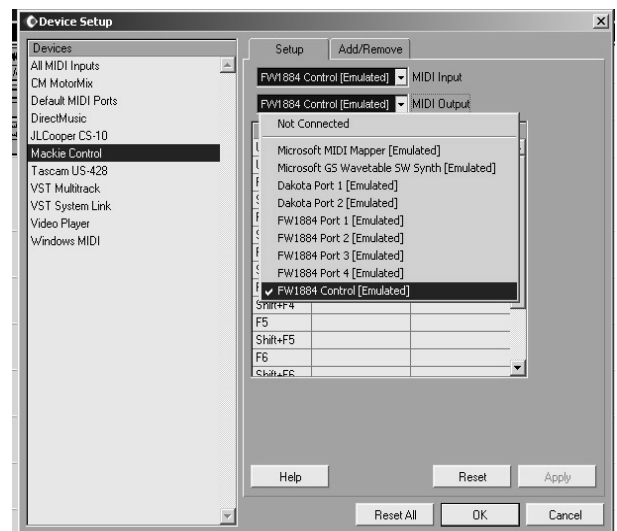
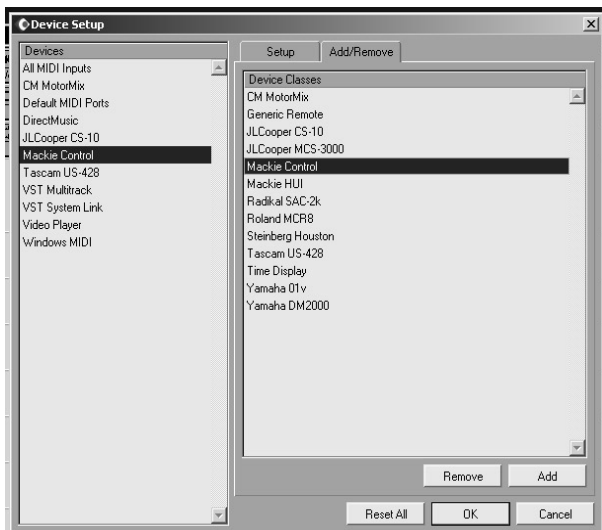
basic recording or to working with Cubase or Nuendo. For more detailed information on the functional operation of Cubase or Nuendo, please refer to the Steinberg manuals for these programs.

The FW-1884 is only supported by versions of Cubase and Nuendo which support the Mackie Control. It is not supported under earlier versions of Cubase, including Cubase VST. This implementation corresponds as much as possible to the Mackie Control mapping as implemented by Steinberg. It is not a generic implementation.

Setup

To set up the FW-1884 in Cubase or Nuendo

- 1 In the **Devices** menu, select **Device Setup**
- 2 Click the **Add/Remove** tab
- 3 Select **Mackie Control** from the list of available devices, and click the **Add** button.
- 4 Click the **Setup** tab
- 5 Locate the **Mackie Control** on the list of installed devices and highlight it by clicking on it once.
- 6 Select **FW-1884 Control** for both **MIDI Input** and **MIDI Outputs**.
- 7 Click **OK**.



NOTE

Do not select both the Mackie Control and the Mackie HUI at the same time. This will cause incorrect operation of the FW-1884 if the FW-1884 Control is selected for MIDI Input and MIDI Output.

To set up the FW-1884 in Mackie Emulation protocol

- 1 Open the **FW-1884 Control Panel**
- 2 Select the **Settings** tab
- 3 In the drop-down **Control Protocol** menu, select **Mackie Control Emulation**.

Cubase SX/SL / Nuendo (Win/Mac): Emulation mapping

Emulation mapping

Below is a description of Mackie Control emulation mapping within Cubase / Nuendo.

Channel Strips The eight channel strips and the master fader on the FW-1884 map directly to the eight channel strips and master fader on the Mackie Control. The **MUTE** and **SOLO** keys and the faders are identical in function. In many cases, the FW-1884 uses the **REC** key as a modifier; for example, holding the **REC** key and pressing a channel **SELECT** key on the FW-1884 will emulate pressing a corresponding **REC/RDY** key on the Mackie Control. To emulate pressing a Mackie Control push-key rotary encoder, press and hold the **REC** key and press the channel **SOLO** key on the FW-1884.

The following table summarizes the channel strip mappings. For this and all subsequent tables in this section: y – means yes, the key or indicator on the Mackie Control is mapped to the FW-1884.

n – means no, the key or indicator on the Mackie Control is not mapped to the FW-1884.

n/a – means there is no key or indicator for that function (for example, a fader move).

FW-1884	Cubase/Nuendo	Key	Light
Fader move	Fader move	n/a	n/a
Touch sensor	Touch sensor	y	n/a
MUTE	MUTE	y	y
SOLO	SOLO	y	y
SELECT	SELECT	y	y
REC light	REC (ch rec enable)	n/a	y
REC + SELECT	REC (ch rec enable)	y	n/a
Encoder turn	Encoder turn	n/a	n/a
CTRL + SEL	Encoder press	y	n/a

Transport Controls Most transport functions are identical between the Mackie Control and the FW-1884. The FW-1884 has no **ZOOM** key and indicator, so the **SET** key is used in its place.

FW-1884	Cubase/Nuendo	Key	Light
REW	REWIND	y	y

FW-1884	Cubase/Nuendo	Key	Light
F FWD	FAST FWD	y	y
STOP	STOP	y	y
PLAY	PLAY	y	y
RECORD	RECORD	y	y
CTRL + RECORD	PI	y	y
◀BANK	<BANK	y	-
BANK▶	BANK>	y	-
Data wheel turns	Data wheel turns	-	-
SHUTTLE	SHUTTLE	y	y
▲	UP	y	-
▼	DOWN	y	-
◀	LEFT	y	-
▶	RIGHT	y	-
SET	ZOOM	y	-
◀◀LOCATE	PO	y	n
LOCATE▶▶	END	y	n
IN	<FRM	y	n
OUT	FRM>	y	n
◀NUDGE	LEFT (cursor)	y	n
NUDGE▶	RIGHT (cursor)	y	n

Assignment Section At the top left of the FW-1884 are its illuminated **ENCODERS** keys. These emulate the Mackie Control **ASSIGNMENT** and **DISPLAY** keys and indicators as shown below.

PAN uses the channel encoders to set both left/right and front/rear pan position.

NOTE

Since the FW-1884 does not have a scribble strip display, the operator must use the applications Mixer window as a visual reference for the following functions.

- 1 Press **PAN** and **AUX 3** if necessary (this is the normal default) to set left/right pan.
- 2 Press **AUX 4** (page-up) to set front/rear position in a surround mix.

EQ (Mackie Control Mode)

- 1 Press **AUX 2** to enable EQ adjustment mode on the FW-1884.
 - 7=Hi-Freq
 - 8=Hi Gain
- 2 Press **AUX 3** (page down) to set Frequency and Gain adjustment for all 4 bands using the channel encoders. Encoders 1-8 correspond as follows:
 - 1=Lo Freq
 - 2=Lo Gain
 - 3=Lo-Mid Freq
 - 4=Lo-Mid Gain
 - 5=Hi-Mid Freq
 - 6=Hi-Mid Gain
- 3 Press **AUX 4** (page up) to enable/disable and set the Q for each band. Encoders 1-8 correspond as follows:
 - 1=Lo on/off
 - 2=Lo Q
 - 3=Lo-Mid on/off
 - 4=Lo-Mid Q
 - 5= Hi-Mid on/off
 - 6=Hi-Mid Q
 - 7=Hi on/off
 - 8=Hi-Q.

Encoder settings

Aux 3 and 4 function as “Page Down” and “Page Up” controls for features that would otherwise use multiple “Pages” of encoder settings displayed on a scribble strip. These functions include Pan, EQ, Sends levels and effects, Insert Plug-Ins, Sends effects parameters, VST Instrument parameters, Master effects parameters.

NOTE

The functions below are multi-page functions that are best used while viewing the appropriate panel in the DAW display. Use the Aux 3 and Aux 4 buttons as described above to navigate the various pages.

Aux 5 uses the channel encoders to set 'SENDS' levels.

- Page 1 - Level for sends 1 through 8 on FW-1884 encoders 1 - 8.
- Page 2 - Send on/off for sends 1 through 8.
- Page 3 - Send pre/post for sends 1 through 8.
- Page 4 - Effects bus select for effects busses 1 through 8.

Aux 6 uses channel encoders to set “Insert” Plug-In parameters.

- Page 1 - Select Insert #, Insert on/off, Effect type (encoders 3-5), encoders 6-8 not used

- Page 2 - various effect parameters dependent on effect type selected above
- Page 3 - continuation of page 2. Actual number of pages will depend on effect type.

F8 Uses channel encoders to set parameters of the effect chosen by Aux 5 (Sends).

- Page 1 - Select Send #, Effect on/off, encoders 3-8 not used
- Page 2 - various effect parameters dependent on effect type selected above
- Page 3 - continuation of page 2. Actual number of pages will depend on effect type.

F9 Uses channel encoders to set parameters of VST Instruments.

- Page 1 - VST Instrument #, on/off, encoders 3-8 not used
- Page 2 - various parameters dependent on instrument type selected above
- Page 3 - continuation of page 2. Actual number of pages will depend on instrument.

Cubase SX/SL / Nuendo (Win/Mac): Shortcuts Section

F10 Uses channel encoders to set parameters of the Master effects chosen on the Master Effects panel.

Page 1 - Master effects #, on/off, encoders 3-8 not used

Page 2 - various effect parameters dependent on effect type selected above

Page 3 - continuation of page 2. Actual number of pages will depend on effect type.

FW-1884	Cubase/Nuendo	Key	Light
FLIP	FLIP	y	y
PAN	PAN	y	y
AUX 1	EDIT	y	y
AUX 2	EQ	y	y
AUX 3	I/O	y	y
AUX 4	SENDS	y	y
AUX 5	DYN	y	y
AUX 6	PLUG-INS	y	y
CTRL + ◀BANK	<CHANNEL	y	-
CTRL + BANK ▶	CHANNEL>	y	-

Shortcuts Section

At the bottom left of the FW-1884 are its fourteen illuminated **SHORTCUTS** keys. These emulate the fourteen keys in the **MODIFIERS**, **AUTOMATION**, and **FUNCTIONS** sections on the Mackie Control, as shown here:

FW-1884	Cubase/Nuendo	Key	Light
SAVE/F1	CONTROL	y	y
REVERT/F2	ALT	y	-
ALL SAFE/F3	N/A		
CLR SOLO/F4	SOLO DEFEAT	y	-
MARKER/F5	MARKER	y	y
LOOP/F6	LOOP	y	y
CTRL + UNDO	REDO	y	y
CUT	F1	y	y

FW-1884	Cubase/Nuendo	Key	Light
DELETE	F2	y	y
COPY	F3	y	y
PASTE	F4	y	y
CTRL + CUT	F5	y	y
CTRL + DELETE	F6	y	y
CTRL + COPY	F7	y	y
CTRL + PASTE	F8	y	y
ALT/CMD	n/a	y	-
UNDO	UNDO	y	-
SHIFT	N/A	y	y
CTRL	N/A	y	-

Function/Automation Keys

Above the FW-1884's main transport keys are eight illuminated keys which can be used to emulate pressing various Mackie Control function and editing keys. This implementation allows you access to various functions within Cubase/Nuendo, including some not silk-screened on the FW-1884's surface.

FW-1884	Cubase/Nuendo	Key	Light
F7	MOTORS	y	-
F8	SENDS	y	-
F9	VSTi	y	-
F10	MASTER FX	y	-
READ	READ	y	-
WRT	WRITE	y	-

FW-1884	Cubase/Nuendo	Key	Light
TCH	PROJECT	y	-
LATCH	MIXER	y	-
CTRL+F7	F9	y	-
CTRL+F8	F10	y	-
CTRL+F9	F11	y	-
CTRL +F10	F12	y	-
CTRL +READ	F13	y	-
CTRL +WRT	F14	y	-
CTRL +TCH	F15	y	-
CTRL +LATCH	F16	y	-

Footswitch

USER SWITCH A and B are the two footswitch inputs on the back of the Mackie Control.

FW-1884	Cubase/Nuendo	Key	Light
Footswitch	USER SWITCH A	y	-
CTRL + Footswitch	USER SWITCH B	y	

TASCAM

TEAC Professional Division

FW-1884

TEAC CORPORATION

Phone: +81-422-52-5082

www.tascam.com

3-7-3, Nakacho, Musashino-shi, Tokyo 180-8550, Japan

TEAC AMERICA, INC.

Phone: +1-323-726-0303

www.tascam.com

7733 Telegraph Road, Montebello, California 90640

TEAC CANADA LTD.

Phone: +1905-890-8008 Facsimile: +1905-890-9888

www.tascam.com

5939 Wallace Street, Mississauga, Ontario L4Z 1Z8, Canada

TEAC MEXICO, S.A. De C.V

Phone: +52-555-581-5500

www.tascam.com

Campesinos No. 184, Colonia Granjes Esmeralda, Delegacion Iztapalapa CP 09810, Mexico DF

TEAC UK LIMITED

Phone: +44-1923-438880

www.tascam.co.uk

5 Marlin House, Croxley Business Park, Watford, Hertfordshire. WD1 8TE, U.K.

TEAC DEUTSCHLAND GmbH

Phone: +49-611-71580

www.tascam.de

Bahnstrasse 12, 65205 Wiesbaden-Erbenheim, Germany

TEAC FRANCE S. A.

Phone: +33-1-42-37-01-02

www.tascam.fr

17 Rue Alexis-de-Tocqueville, CE 005 92182 Antony Cedex, France

TEAC AUSTRALIA PTY.,LTD. A.B.N. 80 005 408 462

Phone: +61-3-9672-2400 Facsimile: +61-3-9672-2249

www.tascam.com.au

280 William Street, Port Melbourne, Victoria 3000, Australia

TEAC ITALIANA S.p.A.

Phone: +39-02-66010500

www.teac.it

Via C. Cantù 11, 20092 Cinisello Balsamo, Milano, Italy
