

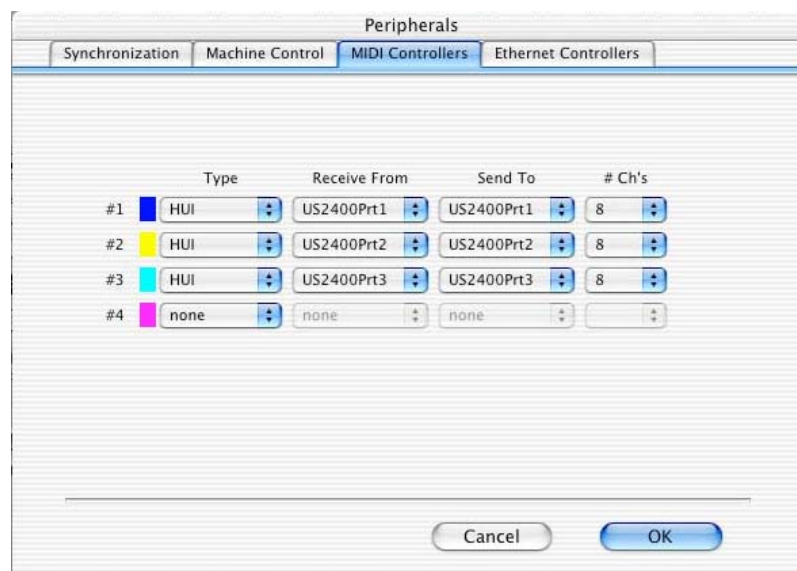
The US-2400 provides all of the hands-on control that big computer mixing projects demand. With twenty-five touch-sensitive moving faders, assignable encoders, flexible metering, surround panning capability and solid transport controls, it's ready for the biggest mix you can throw at it. Using HUI emulation, it's an ideal solution for controlling Pro Tools®. Here's how you set it up.



## Pro Tools Controller Setup

Before setting up the US-2400 in Pro Tools, you have to install a driver that supports the Mackie HUI and JL Cooper MCS Panner, which the US-2400 emulates:

1. Locate your Pro Tools install disc. Find the folder called Unsupported Software, then Legacy Controllers. The Mackie HUI and JL Cooper MCS Panner drivers should be in here. If you can't find your Pro Tools install disc, you can download the drivers from the Digidesign® website at this address: [www.digidesign.com/download/controllers/](http://www.digidesign.com/download/controllers/)
- 2a. On Mac OS X, install this file into the following location: Applications/Pro Tools/Controllers/
- 2b. If you're using a Windows system, install these files into this location: C:\Program Files\Common Files\Digidesign\DAE\Controllers\
3. Put the US-2400 into HUI Emulation mode. To do this, plug in the US-2400 and turn the power off (the power light pulses slowly). While holding down the SELECT and AUX 1 buttons, turn on the US-2400. The AUX 1 button will flash to confirm that you're in HUI emulation mode. (You don't need to use this button combination every time you turn on the US-2400, just when you switch it to HUI emulation mode.)
4. Start Pro Tools. Under the "Setups" menu, choose "Peripherals..." and select the "MIDI Controllers" tab. You should see a window like the one below.



5. Set the Type of controllers #1-3 to HUI. Set the rest of the controls to match the ones above. For example, HUI #1 receive from US2400Prt1 and send to US2400Prt1.

## Pro Tools Surround Joystick Setup

Pro Tools TDM or HD supports surround panning controlled by a MIDI controller, but Pro Tools LE currently does not. If your system is capable of surround panning, and you've completed steps 1-5 on the previous page, here's how you get the surround panner to work in Pro Tools.

1. In the Peripherals dialog you set up in steps 4 and 5, set device #4 to MCS Panner.
2. Set controller #4 to receive from US2400Prt4 and to send to US2400Prt4.



7733 Telegraph Rd • Montebello, CA • 90640 • 323.726.0303 [www.tascam.com](http://www.tascam.com)

© 2004 TEAC Corporation. Digidesign and Pro Tools are registered trademarks of Avid Technology, Inc. in the United States and/or other countries. All other trademarks contained herein are the property of their respective owners. All rights reserved. Design and specifications subject to change without notice.

**TASCAM**