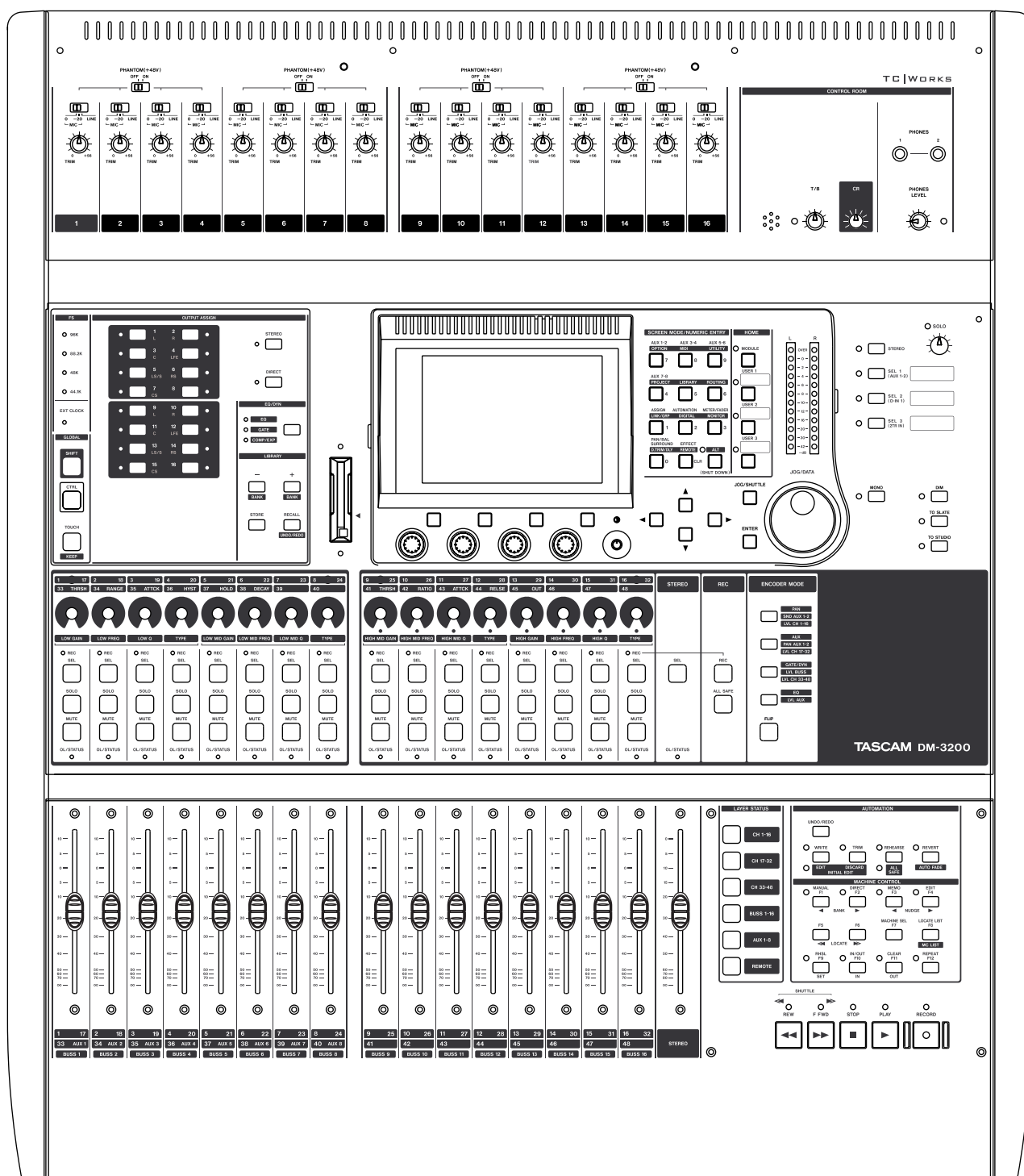


TASCAM

TEAC Professional Division

TMCompanion



SOFTWARE GUIDE

Contents

1 – Introduction and installation

Installation (Windows)	3
Repairing and uninstalling the software	4
Installation (Mac OS X)	4
Uninstalling the software	4

2 – Using the software

Backup and restore	5
Timecode/Transport window	6
Meter bridge	6
Firmware update	7
Screen shot	7

3 – Preferences

MIDI Time Code	8
Window settings	8
Confirmations	8
Settings	8

1 – Introduction and installation

The TASCAM Mixer Companion (or “TMC”) is software for Microsoft Windows XP or Apple Computer’s OS X, allowing the following operations to be carried out from the host computer, using a USB connection for 2-way operation:

- Management of projects, allowing storage and archival of projects on the host computer, and restoration to the DM-3200.
- On-screen metering for channels, busses, aux sends, and the main stereo buss.

- Firmware updates to the DM-3200 are carried out through the TMC.
- A timecode display and on-screen transport controls mirroring those of the DM-3200 can be used.
- A screen shot of the DM-3200 can be downloaded and stored as a PNG (Portable Network Graphics) file on the host computer.

NOTE

This manual refers to the DM-3200 digital mixing console. Future TASCAM products may also be supported by this software in a similar way to that described here.

Installation (Windows)

A computer capable of running Windows XP, with at least one USB port, is required to run the program.

It is strongly recommended that Windows XP Service Pack 2 (SP2) is installed prior to installing TMC (this provides better and more stable MIDI drivers than earlier versions). This Service Pack (English version) is provided on the TMC CD-ROM.

Additionally, the latest Microsoft .NET runtime framework is required to run the software. This is also provided on the CD-ROM and will be installed for you if it is not already installed.

When the CD-ROM is inserted, the autoplay process opens a window providing the option to install TMC or XP SP2, read the release notes, install Adobe Acrobat Reader or visit the TASCAM Web site to look for updates and further release notes, etc.

NOTE

If SP2 is to be installed, this should be done before TMC is installed.

- When installing TMC, a confirmation panel appears, followed by a standard Windows installation program:

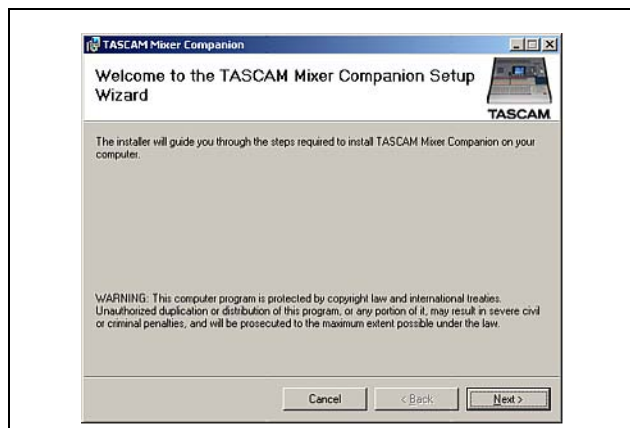


Figure 1.1: Installation start screen

- Press Next> to move to the next screen, which sets out the licensing terms and conditions. Read these, select I Agree, and press Next>.
- Choose the folder in which the program will reside. The default folder C:\Program Files\TASCAM is one in which other TASCAM applications (e.g. GigaStudio) reside, so it is a good idea to leave the default settings here.

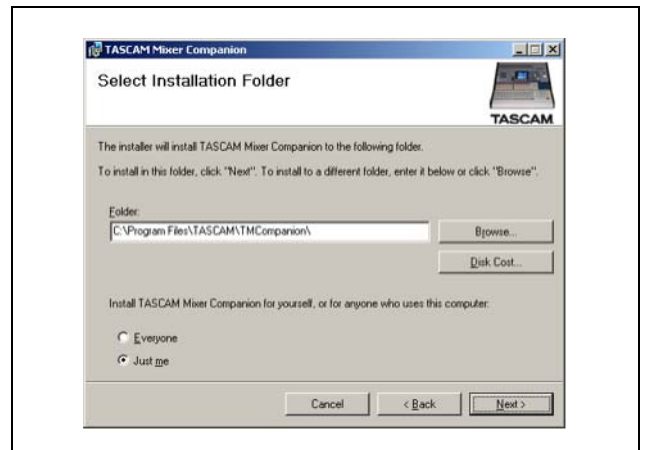


Figure 1.2: Destination folder selection

- After a few more confirmation screens, the program will then install (together with the .NET components if necessary).
- Following the installation, there will be a new TASCAM group in the Start menu, with the TASCAM Mixer Companion as a sub-item in it.

Other items (e.g. Adobe Acrobat Reader) can then be installed as required.

1 – Introduction and installation : Installation (Mac OS X)

Repairing and uninstalling the software

To uninstall the software, run the SETUP.EXE program from the CD-ROM, which allows deinstallation of the program:



Figure 1.3: Uninstalling the software

Note that this option also allows reinstallation of damaged components (Repair).

Alternatively, the Control Panel's Add/Remove Programs item can be used to remove the TMC software in the usual way:

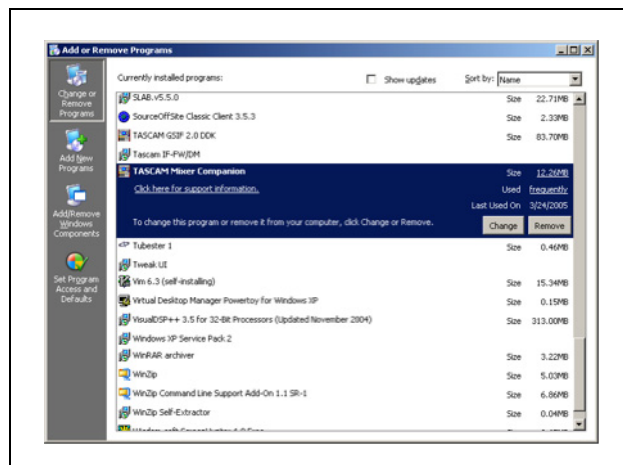


Figure 1.4: Using the Control Panel to remove the TMC software

Installation (Mac OS X)

A computer running OS X 10.3 or above is required.

- **Insert the CD-ROM into the drive. A CD icon labeled “DM Series” appears. Open this disc.**
- **Double-click the installer package to launch the standard OS X Installer program.**

- **When the installation is complete, you will see a program called TMCompanion in the Applications folder.**
- **If you download the Installer from the TASCAM Web site, it will be in the form of a disk image (.dmg) file, which should be attached and used in the usual way.**

Uninstalling the software

Simply drag the TMCompanion application to the Trash (or press Command-Delete).

Make sure the DM-3200 is connected to the computer and turned on. Double-click the application to start it.

If the software does not “see” a DM-3200 connected to the computer, it will not run.

The application will also automatically quit, displaying a warning message panel if the connection to the DM-3200 is broken while the software is running.

Backup and restore

The different functions of the software are accessed through the main window, which appears when the software is launched.

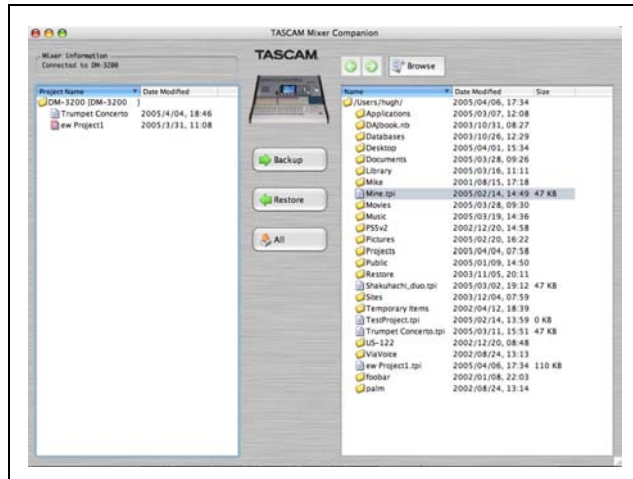


Figure 2.1: TMC Main screen

The left column lists the projects in the DM-3200 card (the currently active project has a red icon).

The right column is a file browser for the host computer. Use the Browse button to select a working folder (the arrow buttons work like Web browser buttons to go backwards and forwards through the navigation history).

Selected folders can be stored as favorites by using the Add Current Folder option from the pull-down menu accessed by clicking the Browse button.

The Remove All Favorites option clears the list of favorite folders.

Projects stored on the computer are named as xxxxx.tpi (TASCAM Project Image).

This main window can be restored to the top by using the Window -> Main Window menu item.

To back up a file to the host computer

Use the methods described above to select the destination folder.

Select a project on the DM-3200 (left column) and drag it into the right column. Confirmation can be switched on and off through the application preferences (see below).

Alternatively, double-click the file, or use the Backup button.

If the current project is selected, the last version of this project stored on the CF card will be copied to the computer.

Multiple files can be selected and moved between the DM-3200 and the host computer.

To restore a file from the host computer

Select the folder containing the folder in the right column.

Select a .tpi project file from the list of files in the right column.

Either drag and drop the file over to the left column (DM-3200), or double-click it, or use the Restore button to move the file.

Multiple files can be selected and moved between the DM-3200 and the host computer.

2 – Using the software : Timecode/Transport window

Timecode/Transport window

Use the Window -> Timecode/Transport menu item to bring up the timecode controller.

NOTE

To use the timecode display, you must use the preferences to set the virtual MIDI port used by the MTC (see “MIDI Time Code” on page 8).

This window has two appearances; a fixed size and a resizable appearance. Change between them by clicking in the timecode area.

Click on the on-screen transport buttons, which work in the same way as the physical transport keys on the DM-3200. Note the “return to start” button which has no physical counterpart.

As timecode is received through the appropriate virtual MIDI port, the display updates.

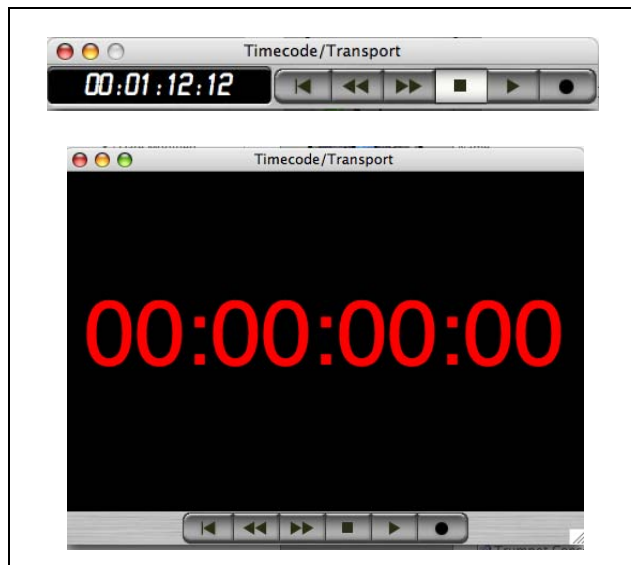


Figure 2.2: Fixed size (top) and resizable (bottom) transport window

Meter bridge

This allows all 48 channels, all busses and all aux sends, along with the stereo buss, to be metered.

Select Meter Bridge from the Windows menu.

Note that this window comes in four “fold-out” sections, accessed by the triangular controls on the left of the window. Figure 2.3, *Meter Bridge window* shows all sections displayed.

The top section allows the meter settings to be made: the type can be either Regular (peak) or Average (more similar to VU meter response). Sliders allow the Meter Decay Rate and Peak Hold Time to be set and a check box provides Infinite peak hold time. The Clear Peaks button resets peak hold displays.

The pickoff points for the meters can then be set. For channels 1 through 32, the choices are: Input, Pre Gate, Post Gate, Pre Insert and Post Fader. Consult the block diagram in the *Owner's Manual* if you are unsure of where these belong.

For channels 33 through 48, the choices are restricted to Input or Post Fader.

For the busses (and aux sends) the choices are: Pre Comp (compressor), Pre Fader and Post Fader.

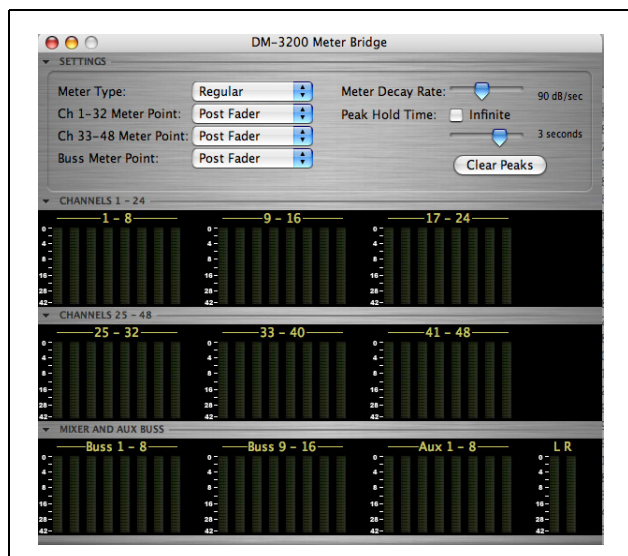


Figure 2.3: Meter Bridge window

Firmware update

From time to time, TASCAM will make updates available from the Web site or through your TASCAM distributor. To install these updates, use the Firmware Update window (accessed from the Windows menu) in the TMC software:

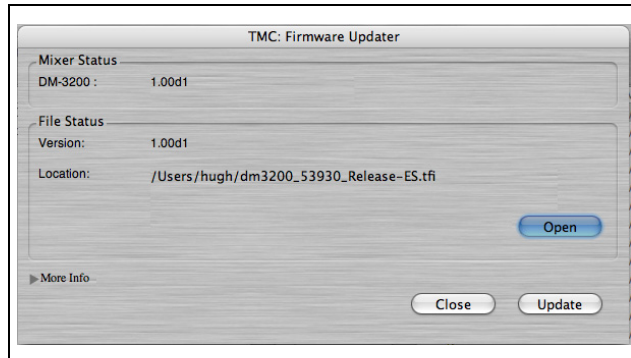


Figure 2.4: Firmware update

Press the on-screen Open button to open a file browser, where you can select the firmware update (these always have a .tfi extension).

The version of the mixer firmware and the version of the new firmware are shown in the Mixer Status and File Status fields, respectively.

More information, including whether the file actually performs a recommended upgrade or not, is available by using the More Info foldout (not shown in Figure 2.4, *Firmware update*).

To update the DM-3200 Press the on-screen Update button. An on-screen status bar displays the progress of the operation, and the screen of the DM-3200 shows the update progress. The process takes under five minutes, including the reboot of the DM-3200 unit.

NOTE

The DM-3200 should not be turned off during the update process or subsequent reboot, although it has a “safety-net” built in which allows the unit to be started without a full operating system.

Use the Close button to close the window without updating the unit.

Screen shot

The screen shot option allows you to dump the current mixer screen as a PNG file to a directory of your choosing.

When the option is selected, a standard browser panel appears, allowing you to select the directory and name the resulting file.

As the screen data is dumped to the host computer, a progress bar appears on screen.

3 – Preferences

The Preferences panel allows the setting of various parameters:

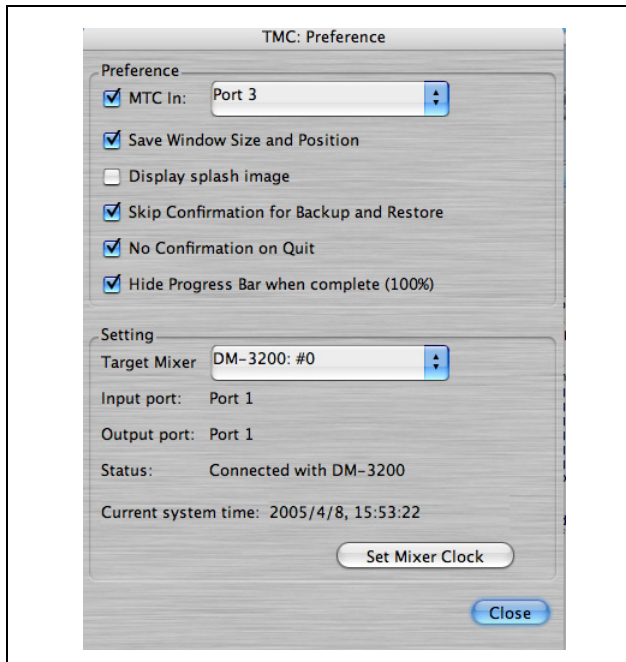


Figure 3.1: Preferences screen

MIDI Time Code

Firstly, MIDI Time Code can be accepted for use with the Transport Window, and the default for this over the USB connection is Port 3 (see the MIDI sec-

tion of the *Owner's Manual* for details of the virtual ports used by the DM-3200).

Enable MTC In and select the MIDI port.

Window settings

The last window size and position can be remembered for future reference (sometimes useful when working with a DAW), using Save Window Size and Position.

Display splash image allows you to choose whether a “splash screen” announces the launching of the TMC application or not.

Confirmations

By default, the TMC software asks for confirmation before transferring project data between the host computer and the DM-3200 (during transfer a

progress bar appears). Turn this confirmation off with the Skip Confirmation for Backup and Restore option.

You can also turn off the notice confirming quitting the application with the No Confirmation on Quit option.

Settings

The Target Mixer option allows you to view the port status and make clock settings for the connected mixer (future releases of the software).

The mixer's internal clock may be set from the host computer's internal clock using the Set Mixer Clock button.

TASCAM

TEAC Professional Division

TMCompanion

TEAC CORPORATION

Phone: +81-422-52-5082
3-7-3, Nakacho, Musashino-shi, Tokyo 180-8550, Japan

www.tascam.com

TEAC AMERICA, INC.

Phone: +1-323-726-0303
7733 Telegraph Road, Montebello, California 90640

www.tascam.com

TEAC CANADA LTD.

Phone: +1-905-890-8008 Facsimile: +1-905-890-9888
5939 Wallace Street, Mississauga, Ontario L4Z 1Z8, Canada

www.tascam.com

TEAC MEXICO, S.A. De C.V.

Phone: +52-555-581-5500
Campesinos No. 184, Colonia Granjes Esmeralda, Delegacion Iztapalapa CP 09810, Mexico DF

www.tascam.com

TEAC UK LIMITED

Phone: +44-1923-438880
5 Marlin House, Croxley Business Park, Watford, Hertfordshire. WD1 8TE, U.K.

www.tascam.co.uk

TEAC EUROPE GmbH

Phone: +49-611-71580
Bahnstrasse 12, 65205 Wiesbaden-Erbenheim, Germany

www.tascam.de

TEAC ITALIANA S.p.A.

Phone: +39-02-66010500
Via C. Cantù 11, 20092 Cinisello Balsamo, Milano, Italy

www.teac.it
