

Sonar	2
Control Details	3
Additional Transport Keys	3
Transport Wheel	3
Special Keys	3
SElect Keys	3
Pan & EQ	4
Aux.....	4
F-Key Shortcuts.....	5
Arrow (Cursor) Keys	5
Bank Keys	5
Master Fader Assignment	6

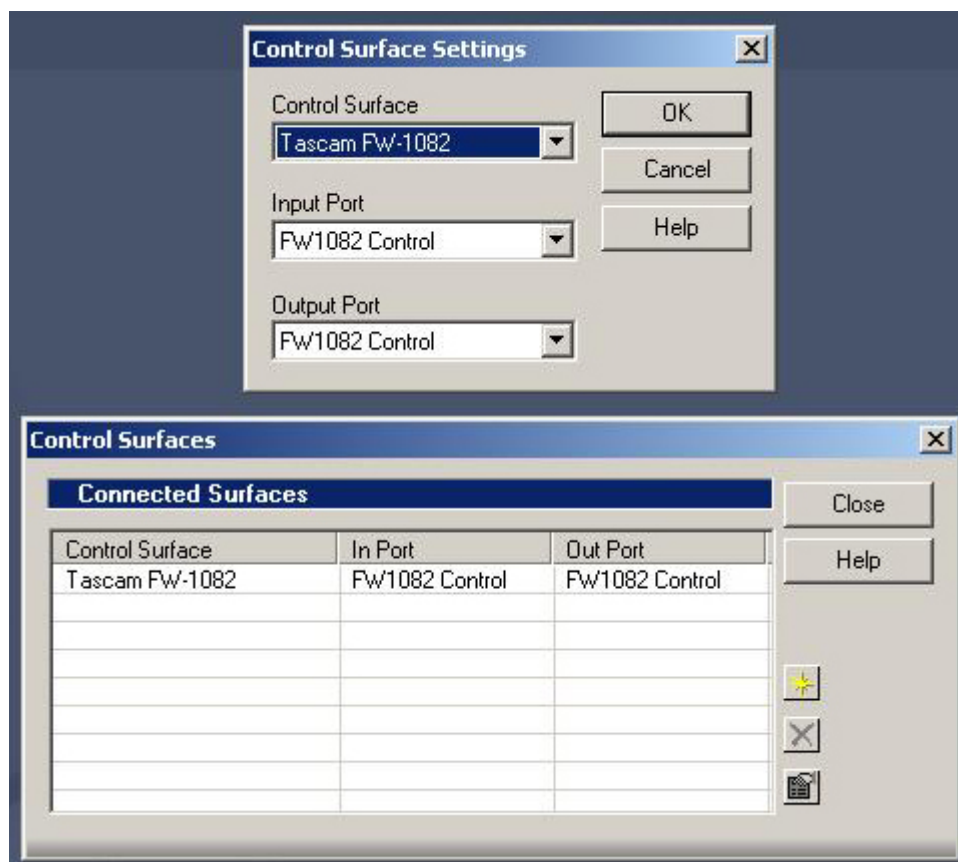
Sonar

For Sonar compatibility, the FW-1082 comes with a control surface plug-in that is compatible with Sonar 3.1b & higher on Windows XP/SP1 & higher.

Install the plug-in from the CD-ROM.

Open the FW-1082 control panel and select Native Mode from the Control Protocol drop down menu under the Settings tab.

Next, open the Control Surfaces window under the Options menu in Sonar, add a new surface by clicking the yellow star, select the FW-1082 Control Surface then assign it to FW-1082 Control. Click OK.



Control Details

Generally the FW-1082's surface controls will function as expected, controlling their like parameters in Sonar. For example: Faders, Mutes, Solos and Transport Control will control those parameters in Sonar. Exceptions and specific details follow:

Additional Transport Keys

SET + REW = RTZ

SET + FF = Go to Tail

IN locates to the beginning of the selection area

OUT locates to the end of the selection area

SET + IN sets Selection IN point at the current playhead position

SET + OUT sets Selection OUT point at the current playhead position

SHIFT + SET + IN sets Loop In Point at the current playhead position

SHIFT + SET + OUT sets Loop Out Point at the current playhead position

SHIFT + IN = set Loop In/Out Points from current selection

SHIFT + OUT = Toggles Loop mode

SHIFT + SET sets Punch In/Out from current selection

<<LOCATE locates to previous marker

LOCATE>> locates to next marker

SHIFT + <<LOCATE or LOCATE>> = Drop Marker at the current playhead position

Transport Wheel

- Turn the data wheel clockwise to jog forward or counter-clockwise to jog backward.
- When the SHTL key is *off*, the data wheel moves the transport in one measure steps. Holding the SHIFT key reduces this to one-beat steps.
- When the SHTL key is *on*, the data wheel moves the transport in 1000-tick steps. Holding the SHIFT key reduces this to 100-tick steps.

Special Keys

SHIFT + PLAY toggles the Audio Engine On/Off

SHIFT + STOP Resets Sonar

SElect Keys

Pressing an FW-1082 SElect key alone will select that channel in Sonar. Holding SHIFT sets that channel's fader to Unity in Sonar.

Holding the red REC key while pressing a SElect key will record-enable/disable that track.

Pan & EQ

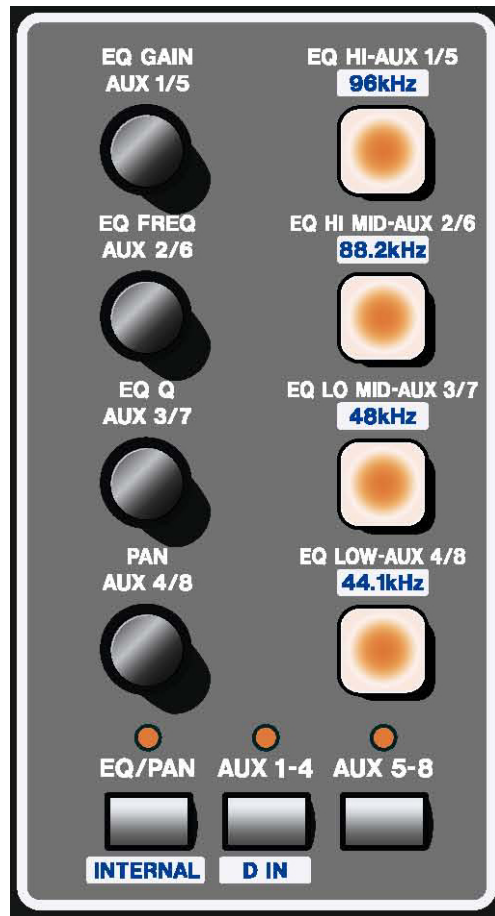
When the EQ/PAN LED is illuminated:

- The lowest of the four encoders shown at right will control the Pan parameter of the SElected channel in Sonar.
- The encoders labeled as GAIN, FREQUENCY and Q will control those parameters of the EQ band selected by the illuminated buttons on the SElected channel in Sonar. Bands 1-4 of Sonar's Channel EQ is supported.
- Holding SHIFT while pressing an EQ band key will enable/disable that EQ band.
- Holding the EQ/PAN key while pressing an EQ band key will toggle through the available EQ curve types.

Aux

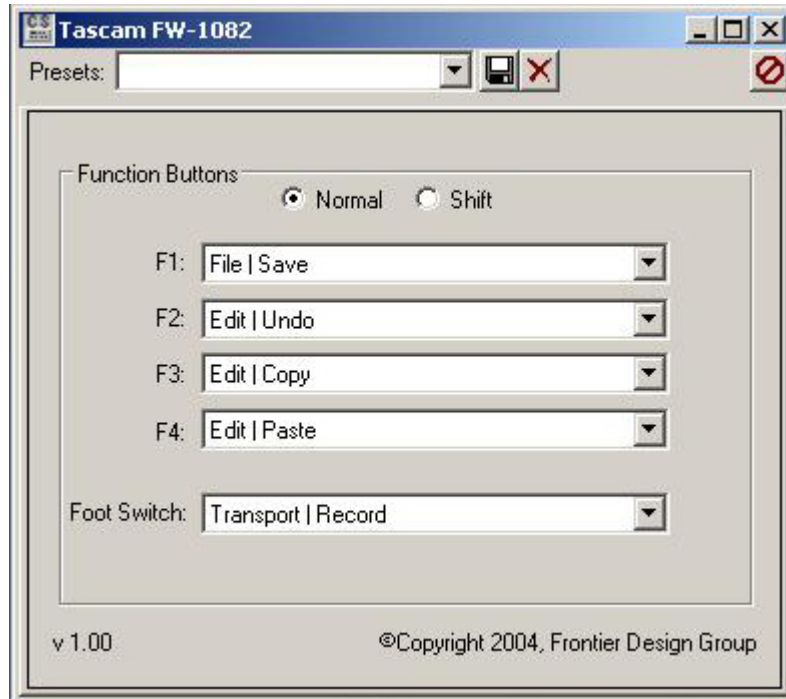
When AUX 1-4 or AUX 1-5 is illuminated:

- The four encoders control the level of Aux Sends 1 – 4 or Aux Sends 1 – 5 of the SElected channel in Sonar.
- Holding SHIFT while turning and encoder will adjust that Aux Send Pan.
- The four keys toggle Aux Send 1 – 4 enable/disable or Aux Send 1 – 5 enable/disable of the SElected channel in Sonar.
- Holding SHIFT while pressing one of the four keys toggles the Pre/Ppost state for that Aux Send of the SElected channel in Sonar.



F-Key Shortcuts

The functions of the F-Keys are programmable in Sonar by selecting TASCAM FW-1082 under the Tools menu. The screen below will appear where you can configure the F-Keys and save/load configurations.



Factory default settings are shown here:

F1 = Save

F2 = Undo

F3 = Copy

F4 = Paste

SHIFT + F1 = Enter

SHIFT + F2 = Redo

SHIFT + F3 = Cut

SHIFT + F4 = Delete

Arrow (Cursor) Keys

Use the Arrow keys to navigate around the on-screen menus, sub-menus and menu items.

Bank Keys

Press the BANK> key or the <BANK key, to shift the FW-1082's controls to the next 8 or previous 8 channels, respectively.

Hold SHIFT and press the BANK> key or the <BANK key, to shift the FW-1082's controls to the next or previous channel, respectively.

Master Fader Assignment

You can switch the master fader assignment to the next or previous virtual main by holding down **SET** while you press either the **<BANK** or **BANK>** key. The **BANK LED** indicators will show which virtual Master the master fader is being assigned to.