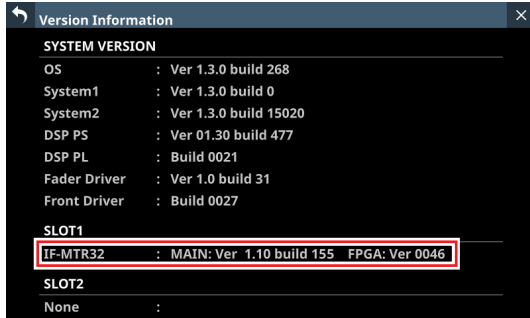


## Checking the firmware version

Before starting firmware update procedures, check the firmware version of the IF-MTR32 (multitrack recording) card you are using.


### On the Version Information screen

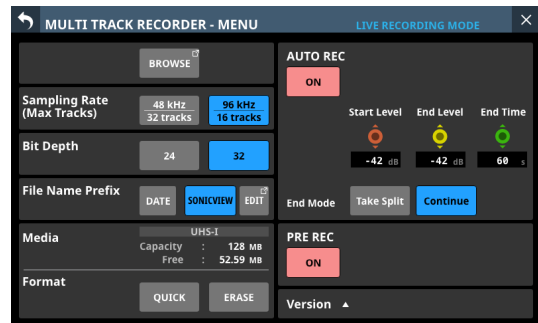
1. Tap Menu Screen > System Setup > Version Information to open the Version Information Screen.



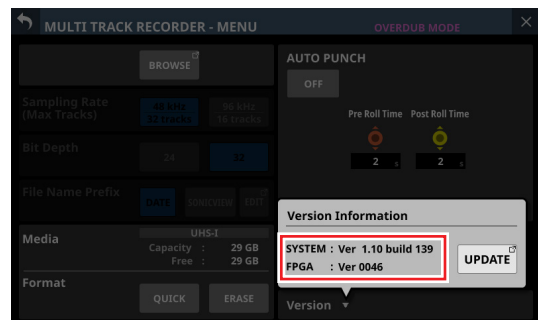
2. Check the IF-MTR32 firmware version on this screen. No update is required if the version you are about to update is the same as shown in this screen or newer.

### From the MULTI TRACK RECORDER - MENU

1. Tap Menu Screen > Recorder/Player menu > Multi Track Recorder to open the MULTI TRACK RECORDER Screen. Then, tap the  button at the top right when the MTR is stopped.



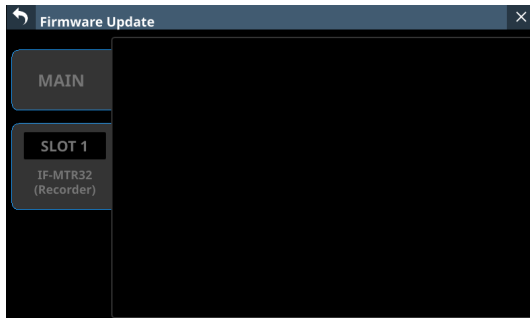
2. Tap Version button to open a window that shows information about the IF-MTR32 firmware version.



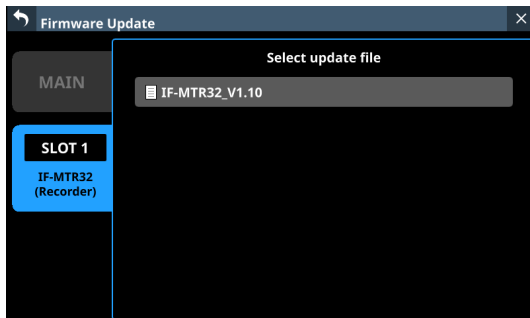
3. Check the IF-MTR32 firmware version on this screen. No update is required if the version you are about to update is the same as shown in this screen or newer.

## Procedures for updating the firmware

1. Download the latest firmware from the TEAC Global Site (<https://teac-global.com/>). Decompress the downloaded file if it is in ZIP format or another compressed file type.
2. Copy the downloaded firmware to the root directory (top level) of a USB flash drive.
3. Insert the USB flash drive prepared in step 2 into the USB port on the top panel.
4. Tap Menu Screen > System Setup > Firmware Update to open the Firmware Update Screen.



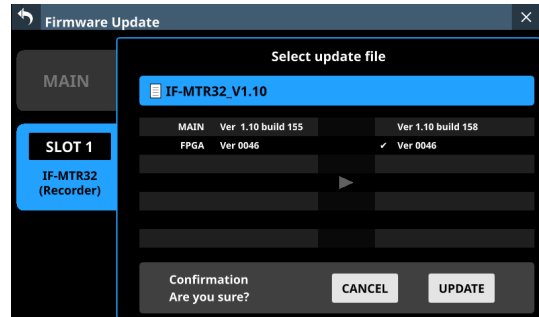
5. Tap the tab of the IF-MTR32 unit you wish to update.
6. When the USB flash drive and firmware update file have been verified, the following screen will appear.



### NOTE

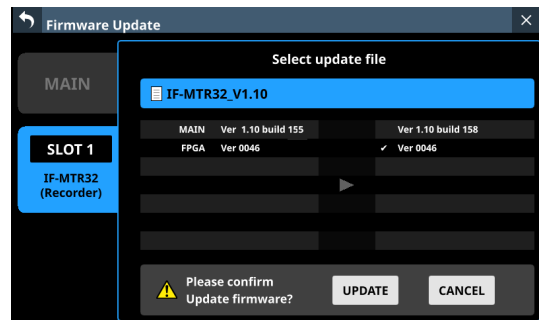
- The screen above shows a list of firmware update files in the root folder of the USB flash drive connected to the USB2.0 port on the front of the unit. The firmware copied in step 2. above will be displayed.
- A maximum of five lines of firmware can be shown at the same time. If there are more files than can be shown on the display at once, swipe the list up or down to scroll it.
- This screen is an example of when the IF-MTR32 is installed in SLOT 1 and nothing else is installed in SLOT 2.

7. Tap the firmware to use for the update to select it. This will automatically prepare the firmware updater and the screen shown below will appear.



The number of the current version is shown on the left and the update version is shown on the right.

8. When an update confirmation message appears, tap the UPDATE button.

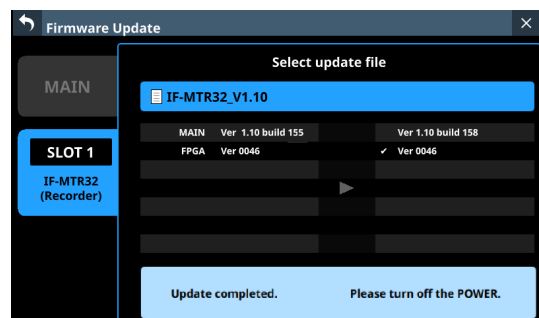


### NOTE

- Be careful not to let the power be interrupted during the update.
  - If the power is interrupted during the update, the unit might become unstartable.
9. When an update confirmation message appears again, tap the UPDATE button. The startup screen will be shown briefly and then updating will start.

### ATTENTION

- Be careful not to let the power be interrupted during the update.
  - If the power is interrupted during the update, the unit might become unstartable.
10. When the update completes, the following screen will appear.



- 11.** Use the POWER switch on the rear panel of the Sonicview unit to reboot the IF-MTR32.
- 12.** After the unit restarts, confirm that the latest firmware is being used. (See “Checking the firmware version” on page 1.)  
This completes updating the IF-MTR32.
- 13.** Delete the firmware update file from the USB flash drive.