

TASCAM US-122 MK II /US-144 MK II Release Notes

Contents

| | | | |
|--------------------------------|---|---|---|
| Updates..... | 1 | For Windows Driver..... | 3 |
| Owner's Manual Addendum | 2 | For Mac OS X Driver..... | 3 |
| Owner's Manual Correction..... | 2 | Notes..... | 4 |
| New functions | 2 | Notice about the use of digital inputs (US-144MKII only)..... | 4 |
| For Windows Driver..... | 2 | Windows 7 64-bit edition | 4 |
| For Mac OS X Driver | 2 | Windows Vista and Windows 7 32-bit/64-bit editions | 4 |
| Maintenance Items..... | 3 | How to install drivers and firmware | 4 |
| For Firmware..... | 3 | Windows | 4 |
| For Windows Driver..... | 3 | Mac OS..... | 5 |
| For Mac Driver..... | 3 | | |
| Known Issues | 3 | | |

Updates

The latest driver and firmware versions for these units are as follows.

Windows

| OS | Driver | Firmware |
|--|----------------------|----------------------|
| Windows 8 (including 8.1) 64-bit Windows 8 (including 8.1) 32-bit Windows 7 64-bit SP1 or later Windows 7 32-bit SP1 or later | 2.05 update | 2.03 (no new update) |
| Windows Vista 64-bit SP3 or later Windows Vista 32-bit SP2 or later Windows XP 64-bit SP2 or later Windows XP 32-bit SP3 or later | 2.03 (no new update) | |

Mac OS X

| OS | Driver | Firmware |
|--|-------------------------|----------------------|
| OS X Yosemite (10.10) OS X Mavericks (10.9) | 3.00d8* (no new update) | 2.03 (no new update) |
| OS X Mountain Lion (10.8) | 2.10 (no new update) | |
| OS X Lion(10.7) Mac OS X Snow Leopard (10.6.8) Mac OS X Leopard (10.5.8) | 2.00 (no new update) | 2.01 (no new update) |
| Mac OS X Tiger (10.4.11) Mac OS X Panther (10.3.9) | 1.14 (no new update) | 2.00 (no new update) |

*For details, see "V3.00d8 (beta) Driver Release Notes for OS X Mavericks (v10.9)".

Always ensure that you are running the latest driver software and US-122MKII or US-144MKII firmware by visiting TEAC Global Site (<http://teac-global.com/>).

Owner's Manual Addendum

Owner's Manual Correction

US-122MKII Owner's Manual, Page 21
US-144MKII Owner's Manual, Page 23

Incorrect:

When using Windows Media Player, if the MIDI music playback output destination (default device) is set to "Microsoft GS Wavetable SW Synth" in the "Sounds and Audio Devices" part of the "Control Panel," you can listen to MIDI performances through this unit's LINE OUT and PHONES output.

Correct:

When using Windows Media Player, if the MIDI music playback output destination (default device) is set to "Microsoft GS Wavetable SW Synth" in the "Sounds and Audio Devices" part of the "Control Panel," you cannot listen to MIDI performances through this unit's LINE OUT and PHONES output.

New functions

For Windows Driver

■ Version 2.03 (Windows 32-bit and 64-bit editions)

In Windows Vista and Windows 7, "24 bit" length can now be selected in the "Sound" settings.

NOTE

In order to use driver V2.03, the firmware must also be updated to V2.03.

■ Version 2.02 (only for Windows 64-bit editions)

This version supports 64-bit editions of Windows 7.

NOTE

This driver cannot be used with Windows 32-bit editions.

■ Version 2.00 (only for Windows 32-bit editions)

The software is now compatible with 32-bit editions of Windows 7, Windows Vista SP2 and Windows XP SP3.

NOTE

- *Please use this driver with above Windows Service Pack.*
- *This driver cannot be used with Windows 64-bit editions.*

For Mac OS X Driver

■ Version 3.00d8

Support has been added for OS X Yosemite (10.10).

■ Version 2.10

Mac OS X Mountain Lion (Core Audio) is now supported.

NOTE

- *In order to use driver V2.10, the firmware must also be updated to V2.03.*
- *If you are using Mac OS X Mountain Lion (10.8), use driver V2.10.*
If you are using Mac OS X 10.5.8, 10.6.8 or 10.7, use driver V2.00.
If you are using Mac OS X 10.3.9 or 10.4.11, use driver V1.14.

■ Version 2.00

Version 2.00 supports Mac OS X v10.6 Snow Leopard (32-bit and 64-bit kernel modes)

NOTE

- *If you are using OS X Mavericks (10.9) or later, use driver V3.00d8.*
If you are using Mac OS X 10.5.8, 10.6.8 or 10.7, use driver V2.00.
If you are using Mac OS X 10.3.9 or 10.4.11, use driver V1.14.

Maintenance Items

For Firmware

■ Version 2.03

Fixes made to work with the Windows V2.03 driver update.

■ Version 2.01

Depending on your computer settings (Windows or Mac), MIDI data might not have been sent from this unit to the computer in some cases. This problem has been fixed.

For Windows Driver

■ Version 2.05 (Windows 32-bit and 64-bit editions)

- After the Windows 8.1 update (KB 2919355) was installed, if a 24-bit option was selected for "Select the sample rate and bit depth to be used when running in shared mode" while a TASCAM USB audio interface was connected, the computer would restart when a Windows system sound played. This is been fixed.

■ Version 2.03 (Windows 32-bit and 64-bit editions)

- With the US-144MKII, when the clock source was set to Internal, there was a problem with digital output not being output. This has been fixed.
- With the US-122MKII, particularly when the sampling frequency was 96 kHz, the sound of recording and playback would sometimes become abnormal. This has been fixed.

■ Version 2.02 (only for Windows 64-bit editions)

- When using Cubase LE 5, the sound output timing was slightly faster than the actual time in some cases. This has been fixed so timing is now correct.
- When using Cubase LE 5, the MIDI output timing was slightly faster than the actual time in some cases. This has been fixed so timing is now correct.
- The digital output settings of the control panel application did not function properly and there were conditions the prevented digital output using Windows Media Player, for example, from being used. This has been fixed. (only for US-144 MKII)

For Mac Driver

■ Version 2.07

- Operation stability has been improved.

NOTE

- *In order to use driver V2.07, the firmware must also be updated to V2.03.*
- *If you are using Mac OS X 10.3.9 or 10.4.11, use driver V1.14.*

Known Issues

For Windows Driver

■ Version 2.03

Windows Vista and Windows 7 32-bit/64-bit editions

After changing the sample rate in the Speakers Properties, the first time a song is played back in Windows Media Player, a very short amount of time (about 150 msec) at the beginning of the song might not be played back. The next time, however, playback will occur without problem.

■ Version 2.00

Some caution screens appear when uninstalling the driver. This doesn't affect the operation.

For Mac OS X Driver

■ Version 2.00

After waking the computer from sleep, the audio interface might not be recognized in some cases, requiring it to be reconnected (by USB) or the computer to be restarted.

Notes

Notice about the use of digital inputs (US-144MKII only)

When using a digital input (**DIGITAL IN**), in the Control Panel for your US-144MKII, set the "Sample Clock" (or "Sample Clock Source") to "automatic" and use the connected device as the clock master. Do not connect a device that cannot be used as a clock master.

Moreover, when using a digital input (**DIGITAL IN**) and a digital output (**DIGITAL OUT**) at the same time, if the Control Panel "Sample Clock" item is set to "internal", the **DIGITAL IN** cannot receive signals, so the **DIGITAL OUT** signal is sent as is back to the **DIGITAL IN**, causing a feedback loop.

For information about the control panel features, see the US-144MKII Owner's Manual chapter 4 – US-144 MKII Control panel settings.

Windows 7 64-bit edition

If the sample rate set in the Speakers Properties ("Control Panel" > "Hardware and Sound" > "Sound") differs from the sample rate of a music file, an error will occur when using Windows Media Player and the file cannot be played back.

Windows Vista and Windows 7 32-bit/64-bit editions

The sample rates shown in "Control Panel" > "Hardware and Sound" > "Sound" might not be in agreement. Set the same sample rate in both the Speakers Properties and Recording Properties.

How to install drivers and firmware

Follow the procedures below to install the latest driver and then update the firmware.

Windows

■ Driver update procedures

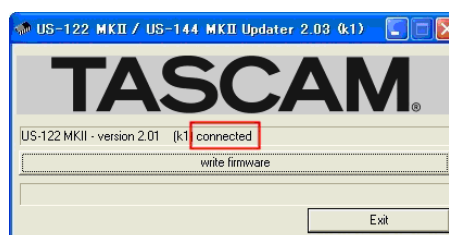
Before beginning installation, disconnect the US-122MKII or US-144MKII from the USB cable.

1. Download the latest driver (Ver. 2.03 driver) for your operating system from the TEAC Global Site (<http://teac-global.com/>), and save it to your computer's hard disk.
2. Uncompress the driver zip file on the hard disk.
3. Double-click the "setup.exe" file to start installation. Follow the procedures in the Owner's Manual to complete the installation.

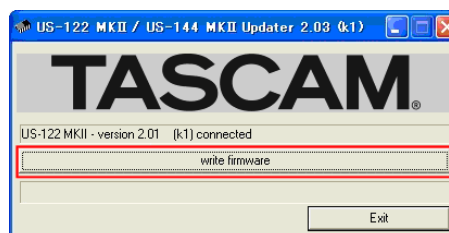
■ Firmware update procedures

After completing installation of the driver and restarting the computer, update the firmware.

4. Download the latest firmware (Ver. 2.03 firmware updater (Windows)) for your operating system from the TEAC Global Site (<http://teac-global.com/>) and save it to your computer's hard disk.
5. Uncompress the saved zip file, and double-click the exe file that appears to start the firmware updater.
6. Connect the US-122MKII or US-144MKII to the computer by USB, and confirm that "connected" appears on the updater screen.



7. Click the "write firmware" button to start the update.

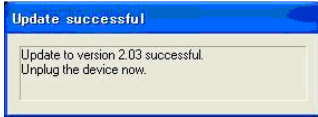


CAUTION

Do not disconnect the USB cable during the update.

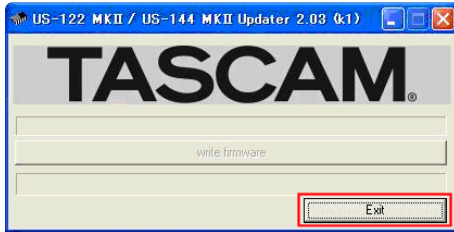
8. When the following message appears after updating completes, disconnect the USB cable.

TASCAM US-122 MK II / US-144 MK II Release Notes



9. After you disconnect the USB cable, the message above disappears. Click the "Exit" button to complete the update.

Reconnect the USB cable to start the unit with the new firmware.



Mac OS

■ Notes about Gatekeeper

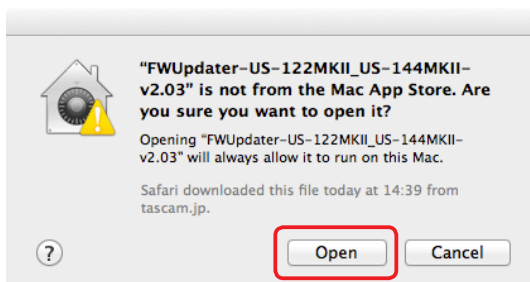
Depending on the Gatekeeper setting, a warning screen might appear during installation.

- **When Gatekeeper is set to "Allow applications downloaded from: Mac App Store"**

This security warning might appear: "[File name]' can't be opened because it was not downloaded from the Mac App Store."



If this occurs, click "OK" to close the warning screen. Then control-click (or right-click) the file name and click "Open" in the menu. When "[File name]' is not from the Mac App Store. Are you sure you want to open it?" appears as a warning, click the "Open" button.



At this time, the same warnings might appear as described in "When Gatekeeper is set to any setting other than 'Allow applications downloaded from: Mac App Store'" below.

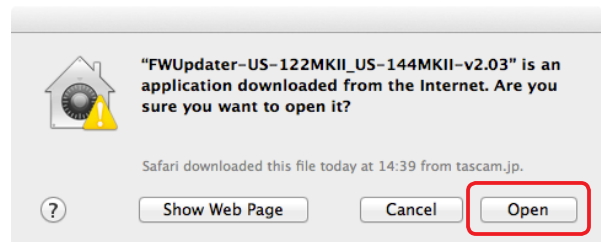
This message might appear again: "[File name]' can't be opened because it was not downloaded from the Mac App Store."



If this happens, copy the file from its folder to the desktop or another folder and execute it again. You can also change the Gatekeeper setting to "Allow applications downloaded from: Mac App Store and identified developers" and execute it again.

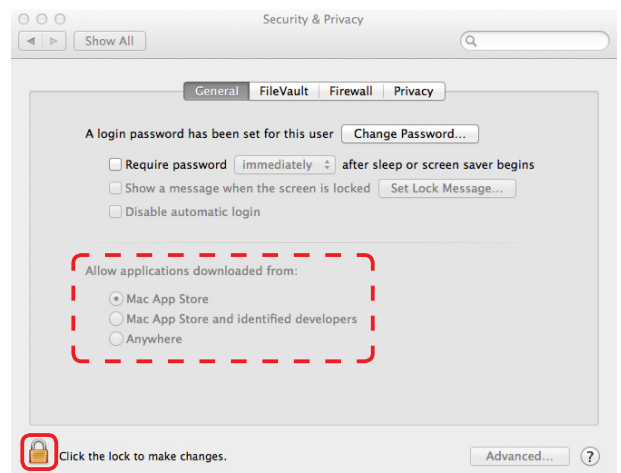
- **When Gatekeeper is set to any setting other than "Allow applications downloaded from: Mac App Store"**

This security warning might appear: "[File name]' is an application downloaded from the Internet. Are you sure you want to open it?" If it does, click the "Open" button.



- **Changing the Gatekeeper setting**

The Gatekeeper setting can be changed on the General page of the Security & Privacy pane of the System Preferences. Click the lock icon at the bottom left corner and entering an administrator password to unlock the settings. Then, set the "Allow applications downloaded from:" item as desired.



The settings will be locked again when you click the button or type command-Q, for example, to quit

TASCAM US-122 MK II / US-144 MK II Release Notes

the System Preferences, or click "Show All" to close the pane.

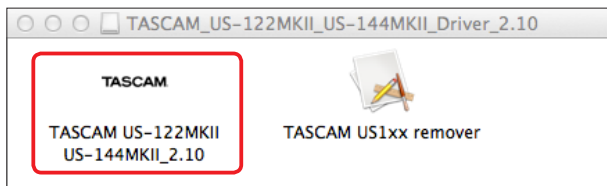
CAUTION

Changing Gatekeeper settings could increase security risks. If you reduce the security by changing the Gatekeeper setting (selecting one of the lower options in the list), after you complete installation of the driver update and/or firmware update, restore the setting to its original value.

■ Driver update procedures

Before beginning installation, disconnect the US-122MKII or US-144MKII from the USB cable.

1. Download the latest driver for your operating system from the TEAC Global Site (<http://teac-global.com/>).
2. Double-click the disk image file (.dmg extension) for the downloaded driver, and double-click the ".mpkg" or ".app" file inside the folder that opens.



NOTE

Depending on the system being used, the downloaded zip file might not decompress automatically. In this case, decompress the zip file and then double-click the updater.

3. Follow the instructions that appear on screen to proceed with installation. Driver installation completes when the computer is restarted.

■ Firmware update procedures

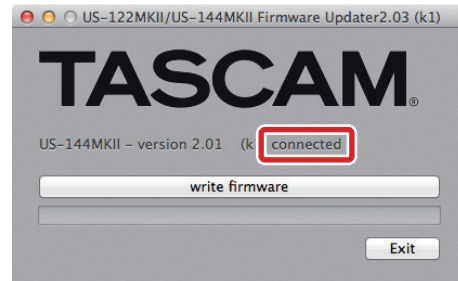
After completing installation of the driver and restarting the computer, update the firmware.

4. Download the Ver. x.xx firmware updater (for Mac OS X) from the TEAC Global Site (<http://teac-global.com/>).
5. Double-click the downloaded updater where it appears in the download window, for example, to launch the firmware updater.

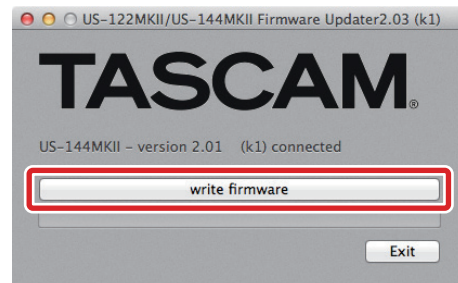
NOTE

- *This security warning might appear: "FW Updater... is an application downloaded from the Internet. Are you sure you want to open it?" If it does, click the "Open" button. Moreover, if the updater disappears from the desktop when this message appears, click the updater's icon in the dock.*

- *Depending on the system being used, the downloaded zip file might not decompress automatically. In this case, decompress the zip file and then double-click the updater.*
6. Connect the US-122MKII or US-144MKII to the computer by USB, and confirm that "connected" appears on the updater screen.



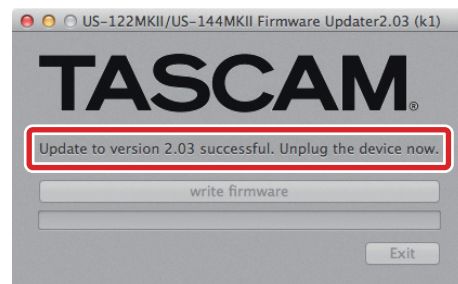
7. Click the "write firmware" button to start the update.



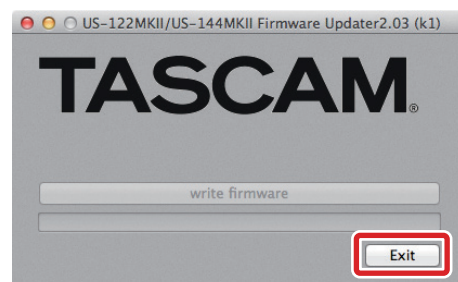
CAUTION

Do not disconnect the USB cable during the update.

8. When the following message appears after updating completes, disconnect the USB cable.



9. After you disconnect the USB cable, the message above disappears. Click the "Exit" button to complete the update.
Reconnect the USB cable to start the unit with the new firmware.



6 TASCAM US-122MKII / US-144MKII

Firmware : 2.03, Windows Driver : 2.03 (32bit) / 2.03 (64bit), Mac OS X Driver : 2.10, Cubase LE5 : 5.1.1