

How to use the TASCAM MIDI Patcher

During the operation environment, no data can be input from **MIDI IN** jack. In that case, please use this patch file.

How to install the TASCAM MIDI Patcher	1
How to uninstall the TASCAM MIDI Patcher	2

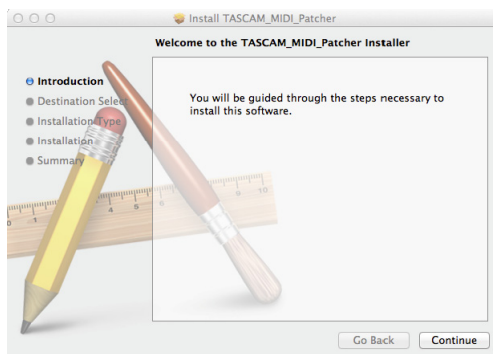
How to install the TASCAM MIDI Patcher

Before installation, quit all applications and disconnect the USB cable from the US-200 or US-600.

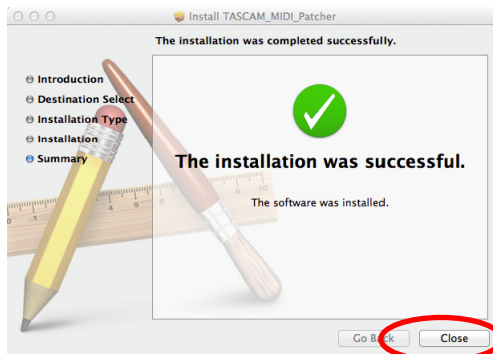
1. Download this patch file from the TASCAM website (<http://tascam.com/>) and save it to your computer's hard disk.
2. Double-click the TASCAM MIDI Patcher.dmg file on the hard disk. The TASCAM MIDI Patcher volume is created and opened automatically. The TASCAM MIDI Patcher and TASCAM MIDI Patcher remover are created in the volume.
3. Double-click the TASCAM MIDI Patcher to launch the installer.



4. Follow the instructions on the screen to continue the installation process.



5. When the screen below appears, the installation is complete. Click the Close button to close the window.

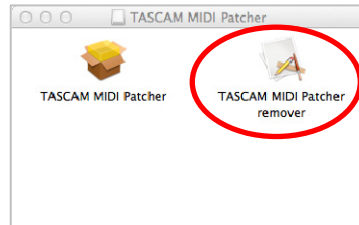


6. Reconnect the USB cable to start the unit.

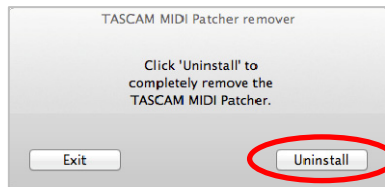
How to uninstall the TASCAM MIDI Patcher

Before uninstallation, quit all applications and disconnect the USB cable from the US-200 or US-600.

1. Double-click the TASCAM MIDI Patcher.dmg file on the hard disk. The TASCAM MIDI Patcher volume is created and opened automatically. The TASCAM MIDI Patcher and TASCAM MIDI Patcher remover are created in the volume.
2. Double-click the TASCAM MIDI Patcher remover to launch the uninstaller (remover).



3. Click Uninstall button to start uninstallation.



4. Follow the instructions on the screen to continue the uninstallation process.
5. When the screen below appears, the uninstallation is complete. Click the Exit button to close the window.



6. Restart the computer.